

KALORI PRODUCTS



Air conditioning



Pressurization



Heating products
and Accessories



1

1

2

3

4

5

AIR CONDITIONING - KALORI

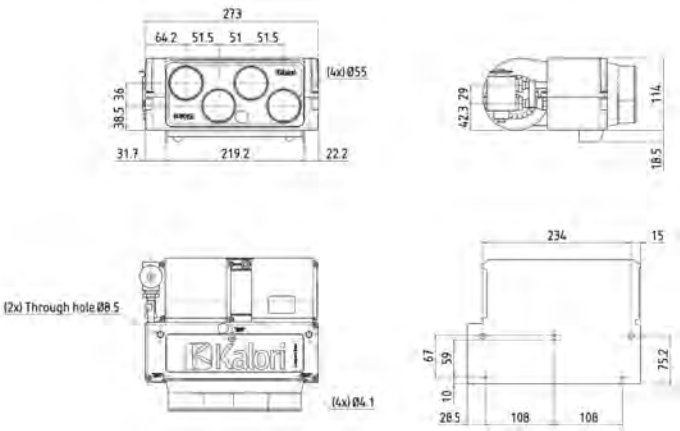
COMPACT EVO2 KLIM ED4

EVAPORATOR

- The smallest evaporator on the market.
- Equipped with a double blower, this evaporator is very compact and can be used for the air-conditioning of a small vehicle or cabin.

| | |
|-------------------------|----------|
| Cooling output | 2.5 kW |
| Airflow | 230 m³/h |
| Electricity consumption | 100 W |
| Ventilation speed | 3 |

| | |
|---------|-----------------|
| Voltage | Reference |
| 12 V | 83.0012.22.0002 |



AIR CONDITIONING - KALORI

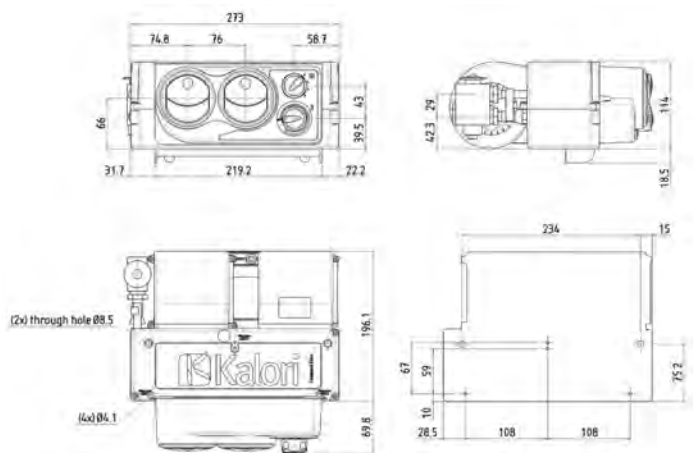
COMPACT EVO2 KLIM FAI

EVAPORATOR

- The smallest evaporator on the market.
- Equipped with a double blower, this evaporator is very compact and can be used for the air-conditioning of a small vehicle or cabin.

| | |
|-------------------------|----------|
| Cooling output | 2.5 kW |
| Airflow | 230 m³/h |
| Electricity consumption | 100 W |
| Ventilation speed | 3 |

| Voltage | Reference |
|---------|-----------------|
| 12 V | 83.0012.22.0003 |
| 24 V | 83.0012.22.0103 |



1

1

2

3

4

5

AIR CONDITIONING - KALORI

SUPER K KLIM

EVAPORATOR

- The ideal air-conditioning for a small ambulance or a van. Also available in combi version (evaporator+heater)
- Super K Klim ED4: for driver's cab
- Super K Klim G: for direct air diffusion throughout the vehicle
- Super K Klim KC: to be fitted into a bulkhead: for ambulance, van or wheelchair van

| | |
|-------------------------|----------|
| Cooling output | 4 kW |
| Airflow | 440 m³/h |
| Electricity consumption | 100 W |
| Ventilation speed | 3 |

| Voltage | Reference |
|----------------------------|-----------------|
| Super K Klim E | |
| 12 V | 83.0012.21.7010 |
| 24 V | 83.0012.21.7110 |
| Super K Klim G | |
| 12 V | 83.0012.21.7012 |
| 24 V | 83.0012.21.7112 |
| Super K Klim ED4 (Ø 55 mm) | |
| 12 V | 83.0012.21.7011 |
| 24 V | 83.0012.21.7111 |
| Super K Klim KC | |
| 12 V | 83.0012.21.7015 |
| 24 V | 83.0012.21.7115 |



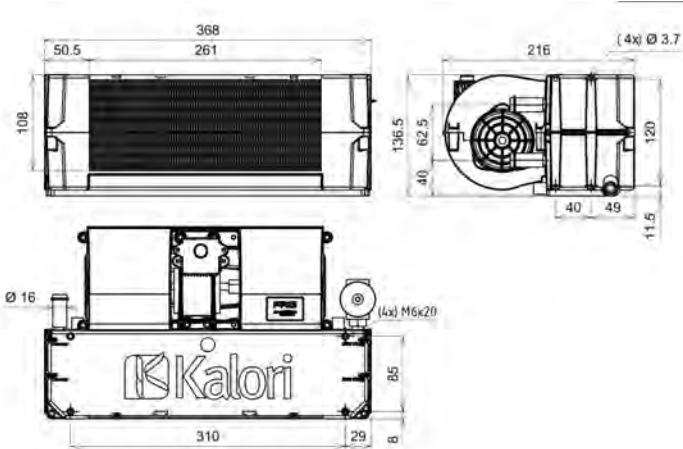
Klim E



Klim G



Klim ED4



1

1

2

3

4

5

AIR CONDITIONING - KALORI

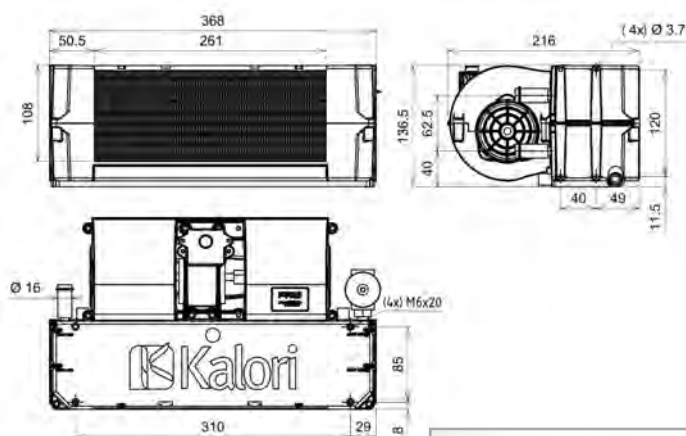
SUPER K KOMBI

EVAPORATOR - HEATER

- Horizontal evaporator-heater
- Super K Kombi ED4: for driver's cab
- Super K Kombi G: for direct air diffusion throughout the vehicle
- Super K Kombi KC: to be fitted into a partition: for ambulance, van or wheelchair van

| | |
|-------------------------|----------|
| Heating power | 4.3 kW |
| Cooling output | 2.5 kW |
| Airflow | 440 m³/h |
| Electricity consumption | 100 W |
| Water connection | Ø 16 mm |
| Ventilation speed | 3 |

| Voltage | Reference |
|-----------------------------------|-----------------|
| Super K Klim E | |
| 12 V | 83.0012.21.7000 |
| 24 V | 83.0012.21.7100 |
| Super K Klim G | |
| 12 V | 83.0012.21.7002 |
| 24 V | 83.0012.21.7102 |
| Super K Klim ED4 (Ø 55 mm) | |
| 12 V | 83.0012.21.7001 |
| 24 V | 83.0012.21.7101 |
| Super K Klim KC | |
| 12 V | 83.0012.21.7014 |
| 24 V | 83.0012.21.7114 |



1

1

2

3

4

5

AIR CONDITIONING - KALORI

AIR CONDITIONING ACCESSORIES

- Diffuser outlets for Super K HVAC

| Reference | Version |
|-----------------|----------------|
| 83.0034.00.7348 | G |
| 83.0034.00.7778 | KC |
| 83.0034.00.7527 | ED4 (Ø 55 mm) |



AIR CONDITIONING - KALORI

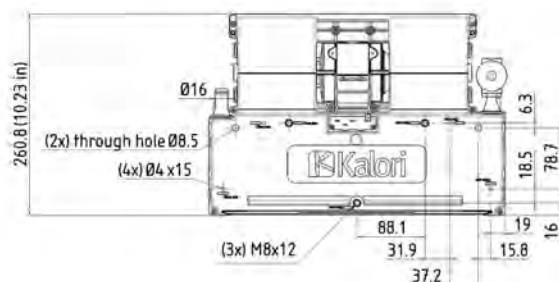
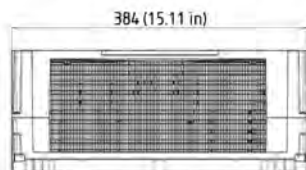
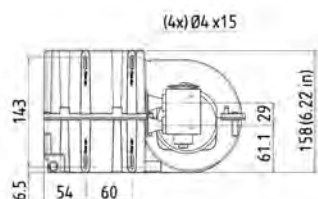
KOOL KLIM

EVAPORATOR

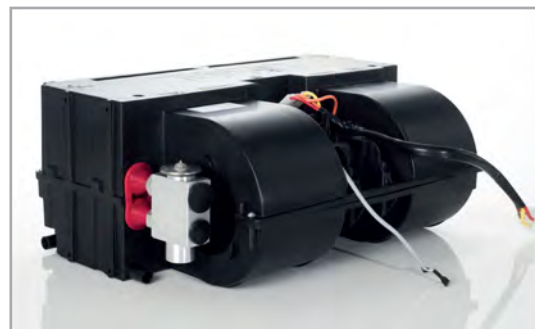
- Horizontal evaporator
- Kool Klim ED6: for driver's cab
- Kool Klim KC: to be fitted into a bulkhead: for ambulance, van or wheelchair van

| | |
|-------------------------|----------|
| Cooling output | 5.7 kW |
| Airflow | 520 m³/h |
| Electricity consumption | 180 W |
| Ventilation speed | 3 |

| Voltage | Reference |
|--------------------------------|-----------------|
| Kool Klim E | |
| 12 V | 83.0012.21.2250 |
| 24 V | 83.0012.21.2350 |
| Kool Klim ED6 (Ø 55 mm) | |
| 12 V | 83.0012.21.2251 |
| 24 V | 83.0012.21.2351 |
| Kool Klim KC | |
| 12 V | 83.0012.21.2204 |
| 24 V | 83.0012.21.2304 |



Klim E



Klim ED6



Klim KC

1

1

2

3

4

5

AIR CONDITIONING - KALORI

DIFFUSER OUTLETS FOR KOOL

AIR CONDITIONING ACCESSORIES

- Diffuser outlets for Kool HVAC

| Reference | Version |
|-----------------|----------------|
| 83.0034.00.7075 | ED6 (Ø 55 mm) |
| 83.0034.01.7148 | KC |



AIR CONDITIONING - KALORI

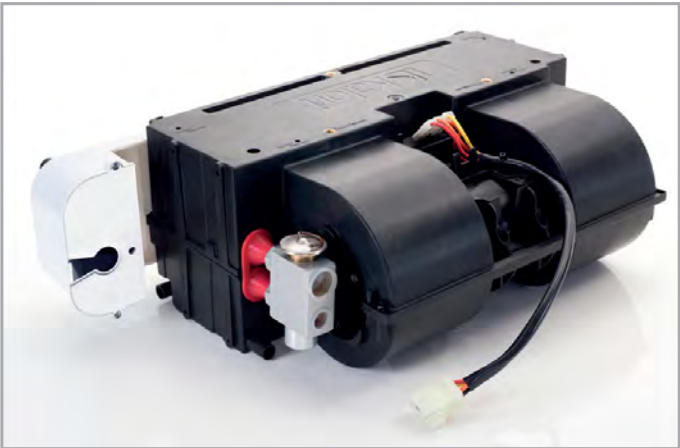
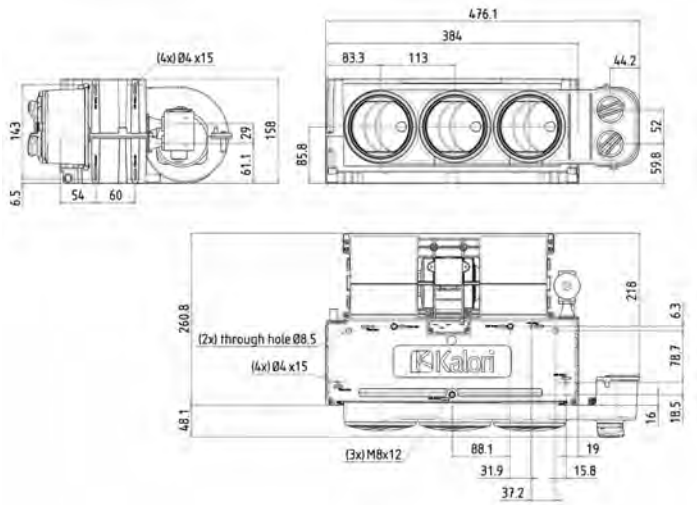
KOOL KLIM FAI

EVAPORATOR

- Horizontal evaporator for ambulance or van - flush mounted
- Ventilation speed and temperature settings on front panel

| | |
|-------------------------|----------|
| Cooling output | 5.7 kW |
| Airflow | 520 m³/h |
| Electricity consumption | 180 W |
| Ventilation speed | 3 |

| Voltage | Reference |
|---------|-----------------|
| 12 V | 83.0012.21.2252 |
| 24 V | 83.0012.21.2352 |



AIR CONDITIONING - KALORI

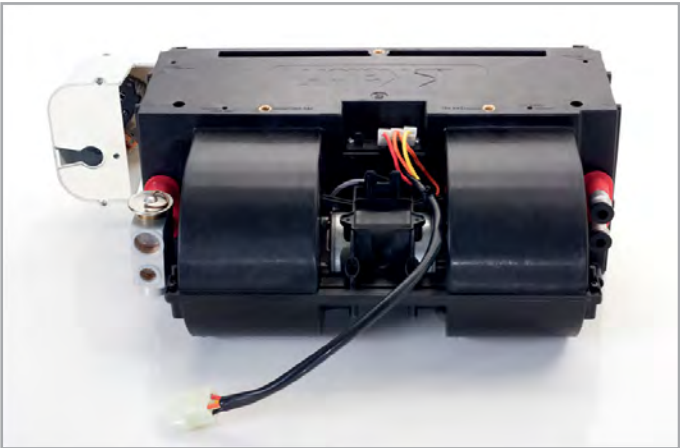
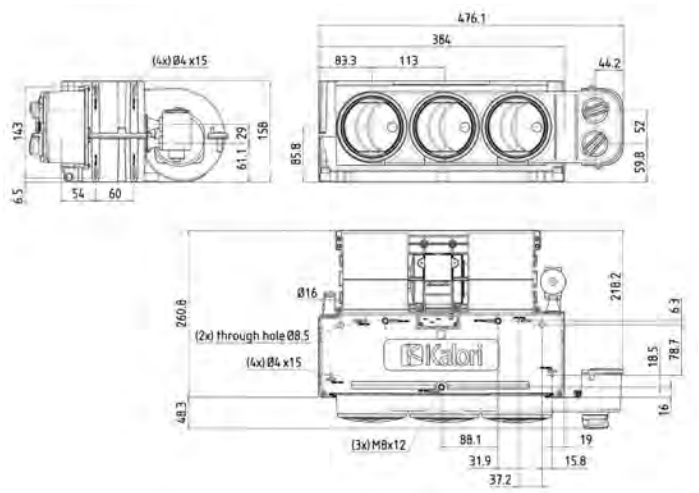
KOOL KOMBI FAI

EVAPORATOR - HEATER

- Horizontal evaporator-heater system for ambulance, wheelchair van
- To fit in a wall
- Ventilation speed and temperature setting included

| | |
|--------------------------------|----------|
| Heating power | 6.6 kW |
| Cooling output | 4.5 kW |
| Airflow | 520 m³/h |
| Electricity consumption | 180 W |
| Raccord eau / Water connection | Ø 16 mm |
| Ventilation speed | 3 |

| Voltage | Reference |
|---------|-----------------|
| 12 V | 83.0012.21.2202 |
| 24 V | 83.0012.21.2302 |



AIR CONDITIONING - KALORI

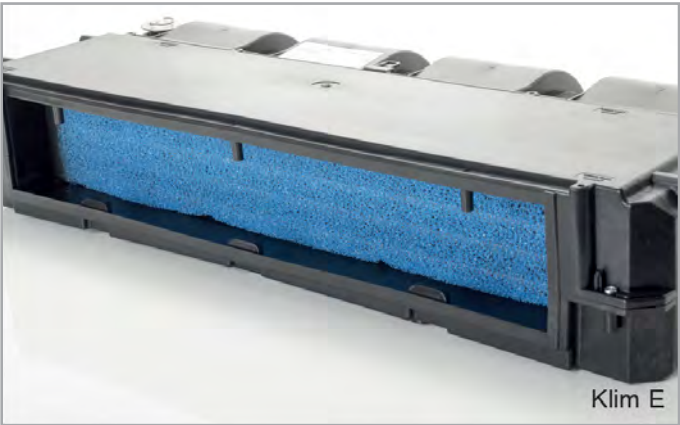
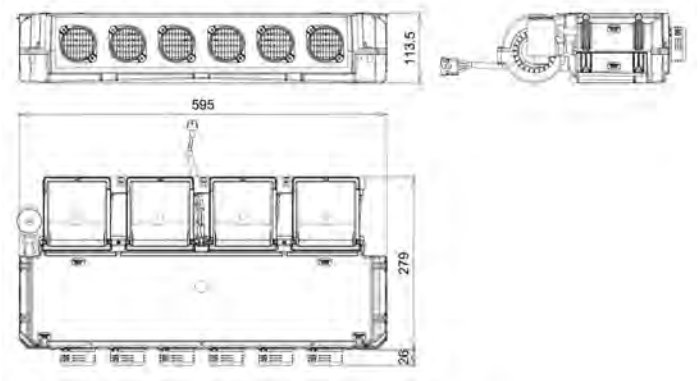
COMPACT EV04 KLIM

EVAPORATOR

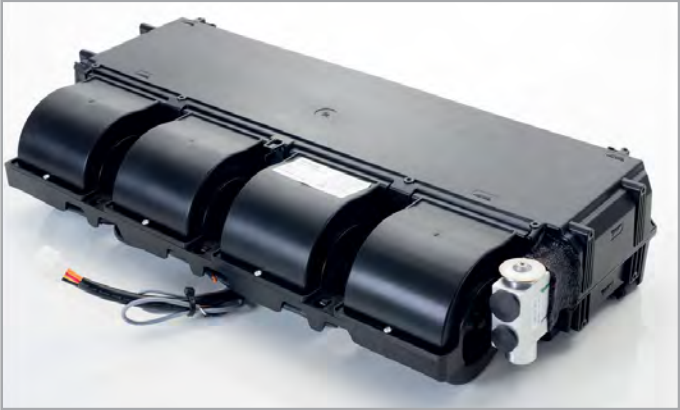
- Extraflat horizontal evaporator
- Specially adapted for the driver's bunk area (also available in combi version - evaporator+heater)

| | |
|-------------------------|----------|
| Cooling output | 6 kW |
| Airflow | 620 m³/h |
| Electricity consumption | 171 W |
| Ventilation speed | 3 |

| Voltage | Reference |
|----------------------------|-----------------|
| Compact EV04 E | |
| 12 V | 83.0012.22.0500 |
| 24 V | 83.0012.22.0550 |
| Compact EV04 ED6 (Ø 55 mm) | |
| 12 V | 83.0012.22.0501 |
| 24 V | 83.0012.22.0551 |
| Air diffuser | |
| White | 83.0034.00.7963 |



Klim E



Klim ED6

AIR CONDITIONING - KALORI

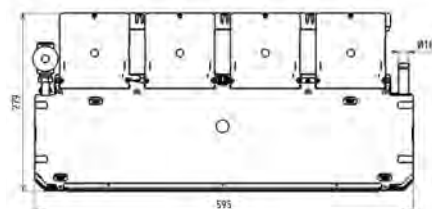
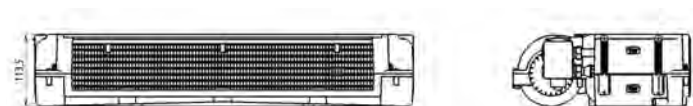
COMPACT EV04 KOMBI

EVAPORATOR - HEATER

- Extraflat horizontal evaporator
- Specially adapted for the driver's bunk area (also available in air-conditioning only version)

| | |
|--------------------------------|----------|
| Heating power | 8.9 kW |
| Cooling output | 5.5 kW |
| Airflow | 480 m³/h |
| Electricity consumption | 171 W |
| Raccord eau / Water connection | Ø 16 mm |
| Ventilation speed | 3 |

| Voltage | Reference |
|---|-----------------|
| Compact EV04 Kombi E | |
| 12 V | 83.0012.22.0502 |
| 24 V | 83.0012.22.0552 |
| Compact EV04 Kombi ED6 (Ø 55 mm) | |
| 12 V | 83.0012.22.0503 |
| 24 V | 83.0012.22.0553 |
| Air diffuser panel | |
| White | 83.0034.00.7963 |



I

1

2

3

4

5

AIR CONDITIONING - KALORI

FALKON KLIM

EVAPORATOR

- Evaporator for ambulance, minibus or cabin
- Extremely efficient for its compactness.

| | |
|-------------------------|----------|
| Cooling output | 9 kW |
| Airflow | 725 m³/h |
| Electricity consumption | 360 W |
| Ventilation speed | 3 |

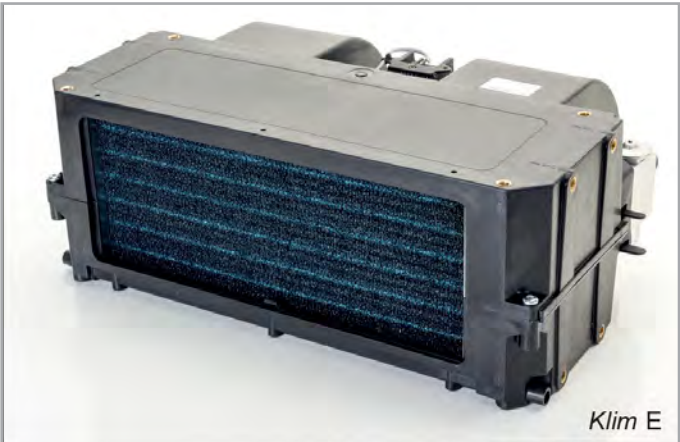
| Voltage | Reference |
|---------------------------|-----------------|
| Falkon Klim E | |
| 12 V | 83.0012.21.9010 |
| 24 V | 83.0012.21.9110 |
| Falkon Klim ED6 (Ø 55 mm) | |
| 12 V | 83.0012.21.9011 |
| 24 V | 83.0012.21.9111 |
| Falkon Klim KC | |
| 12 V | 83.0012.21.9008 |
| 24 V | 83.0012.21.9108 |



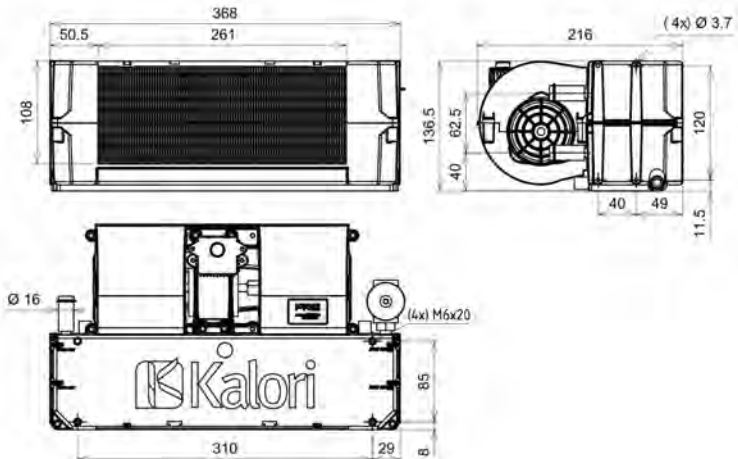
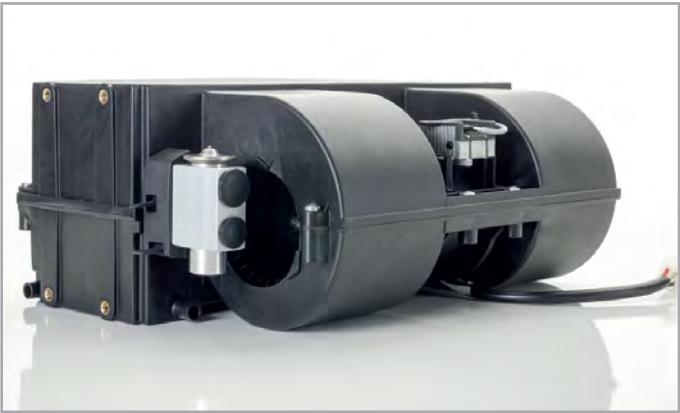
Klim ED6



Klim KC



Klim E



AIR CONDITIONING - KALORI

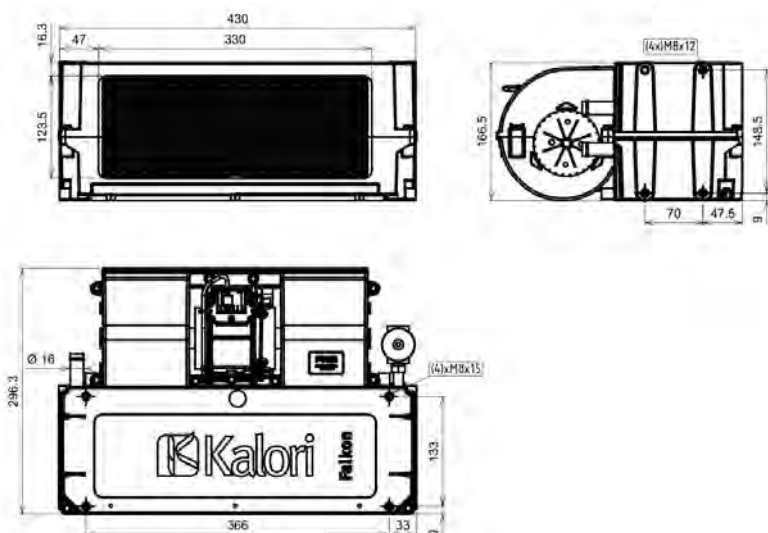
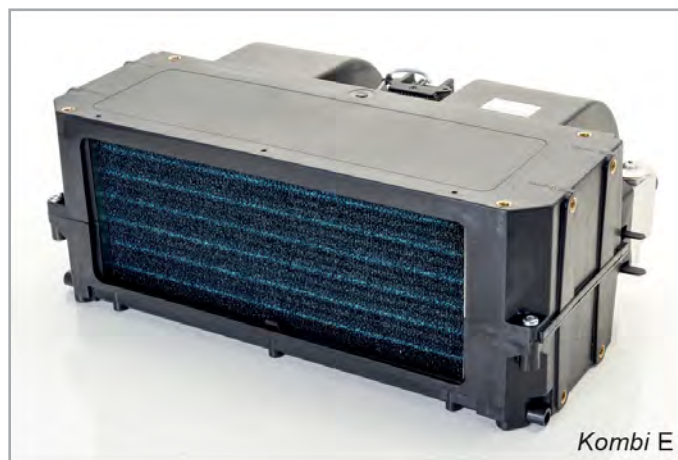
FALKON KOMBI

EVAPORATOR - HEATER

- Evaporator / heater for driver's cab
- Also used for ambulances (numerous approvals)
- Highly efficient and compact air conditioning for a large cabin; also available as an air conditioning (evaporator only) version. Highly resistant to pressure losses, for optimum diffusion even through long duct lengths.

| | |
|--------------------------------|----------|
| Heating power | 10 kW |
| Cooling output | 7.7 kW |
| Airflow | 725 m³/h |
| Electricity consumption | 360 W |
| Raccord eau / Water connection | Ø 16 mm |
| Ventilation speed | 3 |

| Voltage | Reference |
|-----------------------------------|-----------------|
| Falkon Kombi E | |
| 12 V | 83.0012.21.9000 |
| 24 V | 83.0012.21.9100 |
| Falkon Kombi ED6 (Ø 55 mm) | |
| 12 V | 83.0012.21.9001 |
| 24 V | 83.0012.21.9101 |
| Falkon Kombi KC | |
| 12 V | 83.0012.21.9007 |
| 24 V | 83.0012.21.9107 |



1

1

2

3

4

5

AIR CONDITIONING - KALORI

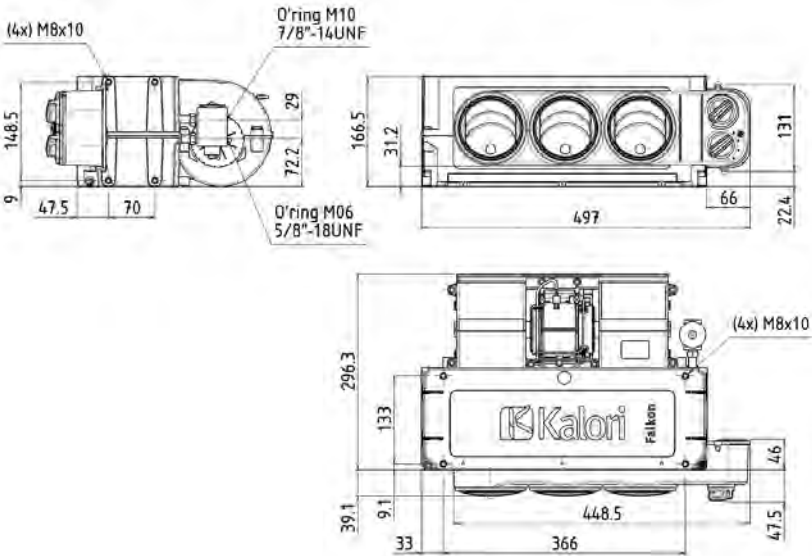
FALKON KLIM FAI

EVAPORATOR

- For economic, aesthetic installations in an ambulance or passenger vehicle.
- The installer uses a cut-out, leaving simply the white facade visible for a top-of-the-range appearance.
- The front panel is fitted with speed and temperature control switches.
- The FALKON can be replaced by the KOOL evaporator in airconditioning only versions or for a combi (heating & air conditioning). In the combi version the temperature is controlled by mixing heating and air conditioning.

| | |
|-------------------------|----------|
| Cooling output | 9 kW |
| Airflow | 725 m³/h |
| Electricity consumption | 360 W |
| Ventilation speed | 3 |

| Voltage | Reference |
|---------|-----------------|
| 12 V | 83.0012.21.9038 |
| 24 V | 83.0012.21.9138 |



AIR CONDITIONING - KALORI

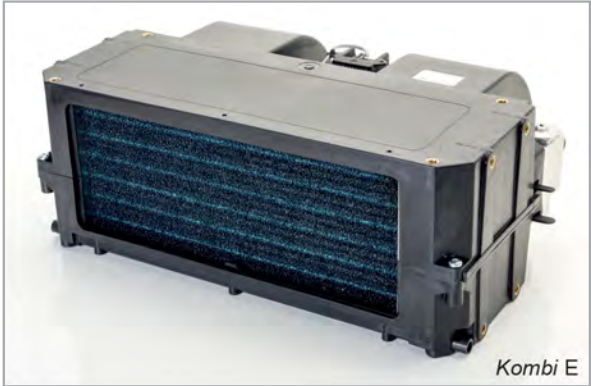
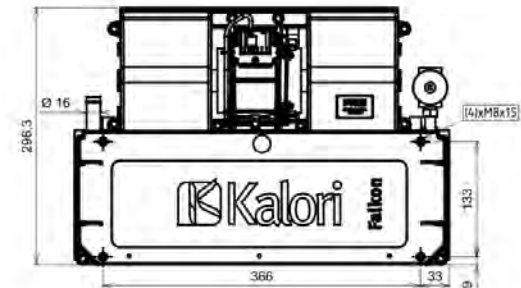
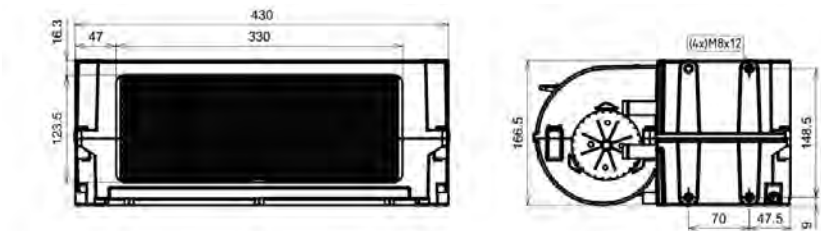
FALKON PLUS KOMBI

EVAPORATOR - HEATER

- Evaporator / heater for driver's cabin
- Optimized version of standard Falcon Kombi for more cooling output
- Also used for ambulances (numerous approvals)
- Extremely efficient for its compactness.
- Highly efficient and compact air conditioning system for a large cabin. Highly resistant to pressure losses, for optimum diffusion even through long ducts.

| | |
|-------------------------|----------|
| Heating power | 10 kW |
| Cooling output | 9 kW |
| Airflow | 870 m³/h |
| Electricity consumption | 430 W |
| Water connection | Ø 16 mm |
| Ventilation speed | 3 |

| Voltage | Reference | Min. operational pressure loss |
|---------------------------------|-----------------|--------------------------------|
| Falkon Plus Kombi E | | |
| 12 V | 83.0012.21.9032 | 200 Pa |
| 24 V | 83.0012.21.9132 | — |
| Falkon Plus Kombi ED6 (Ø 55 mm) | | |
| 12 V | 83.0012.21.9033 | 200 Pa |
| 24 V | 83.0012.21.9133 | — |
| Falkon Plus Kombi KC | | |
| 12 V | 83.0012.21.9034 | 200 Pa |
| 24 V | 83.0012.21.9134 | — |



Kombi E



Kombi ED6



Kombi KC

AIR CONDITIONING - KALORI

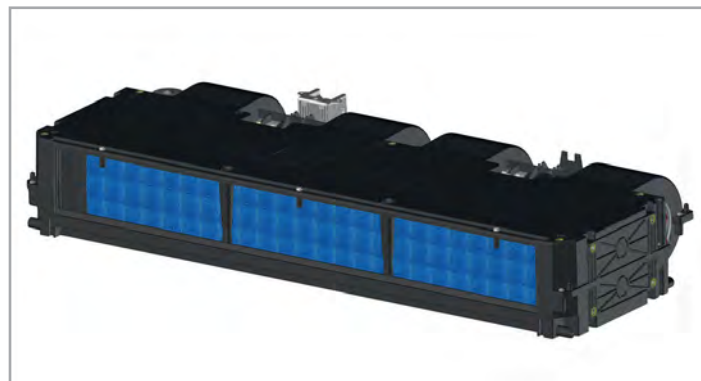
HK EV04 KLIM

EVAPORATOR

- A/C evaporator fitted with two radial ventilators.
- This evaporator has an unequalled height/power ratio.
- Designed to be fitted to large cabs.
- Also available for fitting to minibuses.

| | |
|-------------------------|-----------|
| Cooling output | 10.7 kW |
| Airflow | 1300 m³/h |
| Electricity consumption | 190 W |
| Ventilation speed | 3 |

| Voltage | Reference |
|---------|-----------------|
| 12 V | 83.0012.22.2002 |
| 24 V | 83.0012.22.2102 |



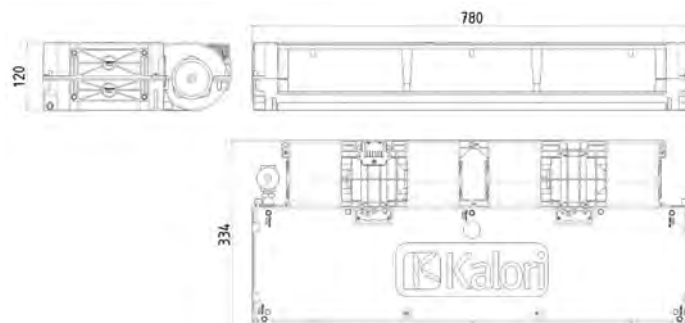
HK EV04 KOMBI

EVAPORATOR - HEATER

- A/C evaporator fitted with two radial ventilators.
- Combi evaporator
- This evaporator has an unequalled height/power ratio, it is designed to be fitted to large cabs and is also available for fitting to minibuses.
- Also available in A/C evaporator versions

| | |
|-------------------------|-----------|
| Heating power | 9.5 kW |
| Cooling output | 8.6 kW |
| Airflow | 1300 m³/h |
| Electricity consumption | 190 W |
| Water connection | Ø 16 mm |
| Ventilation speed | 3 |

| Voltage | Reference |
|---------|-----------------|
| 12 V | 83.0012.22.2001 |
| 24 V | 83.0012.22.2101 |



I

1

2

3

4

5

AIR CONDITIONING - KALORI

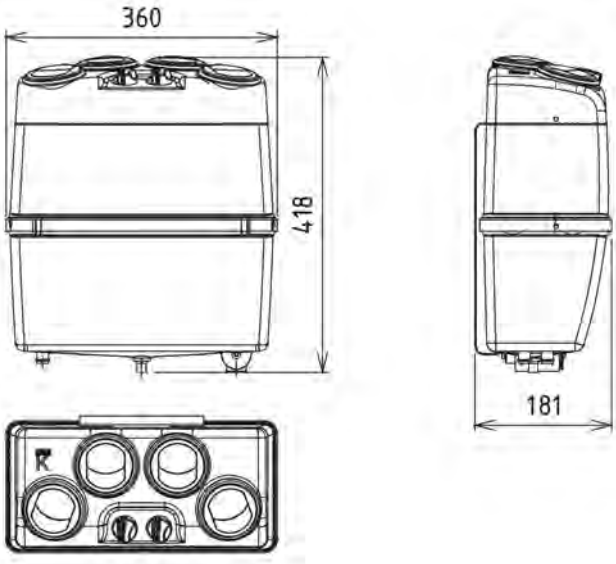
ARTIK XL

EVAPORATOR - HEATER

- Vertical HVAC unit for forklift truck, ambulance or van.
- Complete unit with ventilation and temperature control.

| | |
|-------------------------|----------|
| Heating Power | 5 kW |
| Cooling output | 4.5 kW |
| Airflow | 500 m³/h |
| Electricity consumption | 192 W |
| Water connection | Ø 16 mm |
| Ventilation speed | 3 |
| Color | Grey |

| Voltage | Reference |
|---------|-----------------|
| 12 V | 83.0012.20.0010 |
| 24 V | 83.0012.20.0110 |



AIR CONDITIONING - KALORI

KLIMATOP

EVAPORATOR - HEATER

- Roof-mounted, mono-bloc evaporator heater/system

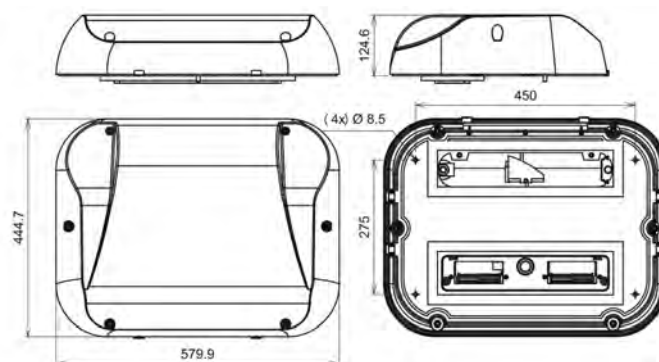
| Klimatop Klim (Evaporator) | |
|----------------------------|----------|
| Cooling output | 5.5 kW |
| Airflow | 595 m³/h |
| Electricity consumption | 150 W |
| Ventilation speed | 3 |

| Voltage | Reference |
|------------------|-----------------|
| Standard | |
| 12 V | 83.0012.21.6000 |
| 24 V | 83.0012.21.6100 |
| Rear connections | |
| 12 V | 83.0012.21.6003 |
| 24 V | 83.0012.21.6103 |

| Klimatop Kombi (HVAC) | |
|-------------------------|----------|
| Heating Power | 6 kW |
| Cooling output | 5 kW |
| Airflow | 560 m³/h |
| Electricity consumption | 150 W |
| Water connection | Ø 16 mm |
| Ventilation speed | 3 |

| Voltage | Reference |
|------------------|-----------------|
| Standard | |
| 12 V | 83.0012.21.6001 |
| 24 V | 83.0012.21.6101 |
| Rear connections | |
| 12 V | 83.0012.21.6002 |
| 24 V | 83.0012.21.6102 |

| | |
|---|-----------------|
| Option: grey air diffuser with air filter | |
| Standard | |
| 83.00.340.07.365 | |
| Electronic control panel | |
| 12 V | 83.0034.00.7366 |
| 24 V | 83.0034.00.7367 |



340.07.365



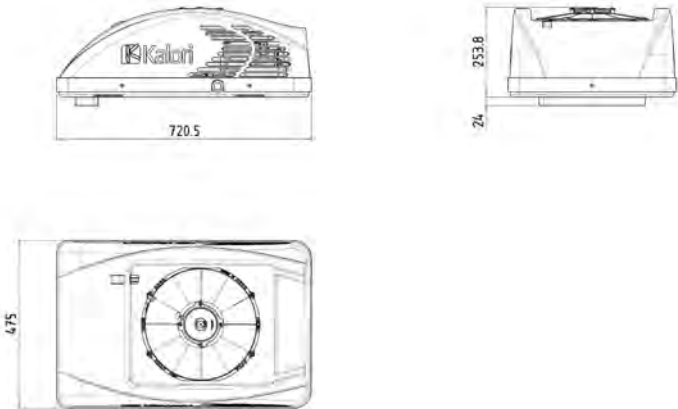
340.07.366

AIR CONDITIONING - KALORI

ELECTRIK

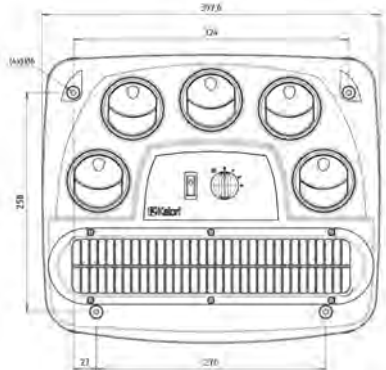
ROOF ELECTRICAL A/C UNIT

- Complete AC unit with electrical compressor
- This unit is ideal for small series or for a vehicle where it is impossible to
- Check the capacity of your alternator



| | |
|-------------------------|----------|
| Cooling output | 305 kW |
| Airflow | 440 m³/h |
| Electricity consumption | 25 W |
| Ventilation speed | 3 |
| Finishing | White |

| Ventilation voltage | Compressor voltage | Reference | Electricity | Intensity consumption |
|---------------------|--------------------|-----------------|--------------------|-----------------------|
| 12 V | 12 V | 83.0012.27.0000 | 950 W | 79 A |
| 24 V | 24 V | 83.0012.27.0100 | 1560 W | 65 A |
| 24 V | 40-95 V | 83.0012.27.0200 | Depends on its use | Depends on its use |



AIR CONDITIONING - KALORI

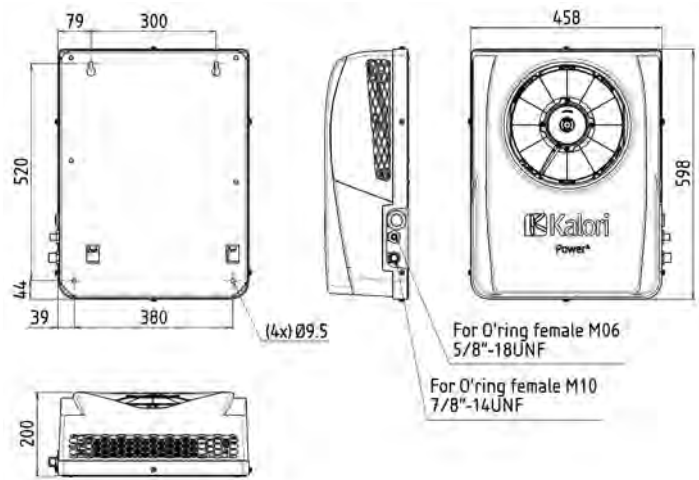
POWER K

CONDENSER UNIT

- Evaporator / heater for driver's cabin
- External condenser unit for a/c system
- Includes an electrical compressor, condenser and dehumidifiere filter.
- This unit may be attached to a standard KALORI evaporator. To fitout an electical vehicles, select a hybrid evaporator, which includes a classic evaporator and a PTR electrical heating element.
- Version for vertical installation
- Version for horizontal installation

| | |
|-------------------|----------|
| Cooling output | 3.5 kW |
| Weight | 20 kg |
| Ventilation speed | 3 |
| Finish | White |
| Mounting position | Vertical |

| Ventilation voltage | Compressor voltage | Reference Reference | Electricity Intensity consumption |
|---------------------|--------------------|---------------------|-----------------------------------|
| 12 V | 12 V | 83.0012.60.0001 | 820 W |
| 24 V | 24 V | 83.0012.60.0101 | 1500 W |
| 24 V | 40-95 V | 83.0012.60.0200 | 1300 W |



AIR CONDITIONING - KALORI

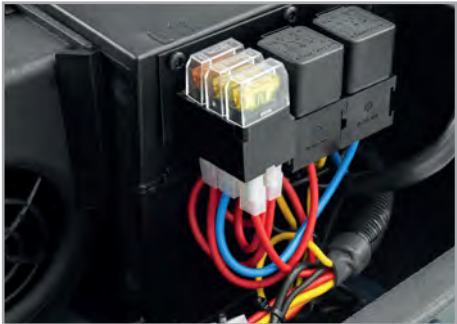
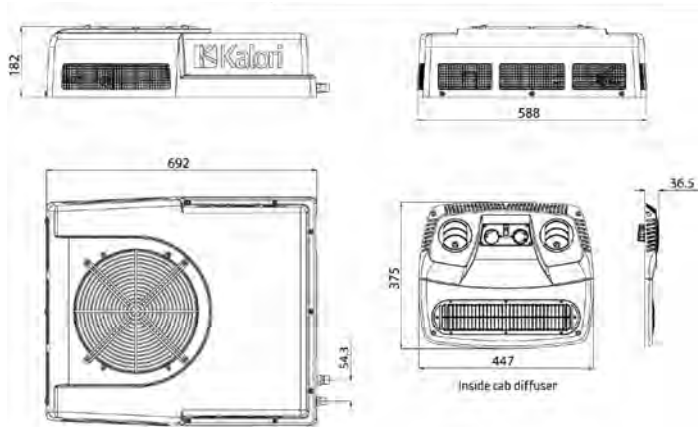
KANADA II KLIM

ROOFTOP UNIT

- Rooftop evaporator-condenser vehicle (also available in combi version – evaporator+heater)
- With integrated drier filter
- Can be connected to a standard or electrical compressor on an electrically-driven vehicle.

| | |
|-------------------------|----------|
| Cooling output | 6 kW |
| Airflow | 500 m³/h |
| Electricity consumption | 330 W |
| Weight | 19 kg |
| Ventilation speed | 3 |
| Finishing | White |

| Voltage | Reference |
|----------------------------|-----------------|
| 12 V | 83.0012.21.4004 |
| 24 V | 83.0012.21.4104 |
| Grey optional air diffuser | |
| 12 V | 83.0034.00.7366 |
| 24 V | 83.0034.00.7367 |



AIR CONDITIONING - KALORI

KANADA II KOMBI

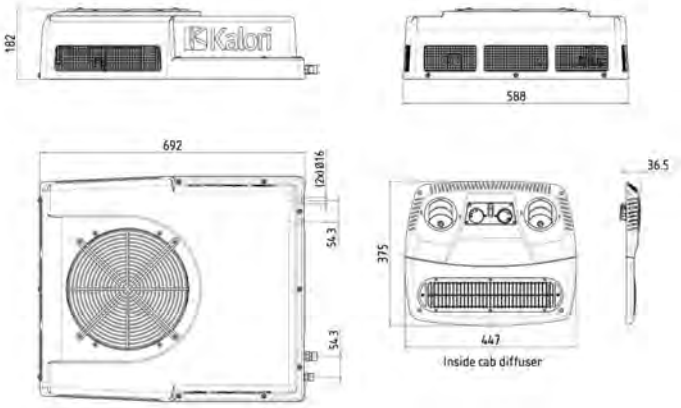
ROOFTOP UNIT

- Evaporator/heater - rooftop condenser (also available in airconditioning only)
- With integrated drier filter
It can be connected to a standard or electric compressor on an electrically-driven vehicle.

| | |
|-------------------------|----------|
| Heating power | 6.6 kW |
| Cooling output | 4.5 kW |
| Airflow | 500 m³/h |
| Electricity consumption | 330 W |
| Weight | 19 kg |
| Water connection | Ø 16 mm |
| Ventilation speed | 3 |
| Finishing | White |



| Voltage | Reference |
|----------------------------|-----------------|
| 12 V | 83.0012.21.4004 |
| 24 V | 83.0012.21.4104 |
| Grey optional air diffuser | |
| 12 V | 83.0034.00.7366 |
| 24 V | 83.0034.00.7367 |



AIR CONDITIONING - KALORI

RK 12/RK 14 KLIM

ROOFTOP UNIT

- Air conditioning for minibus or ambulance
- The set includes the evaporator equipped with a single doubleflow blower, a condenser and the drier filter
- For air diffusion - ask for details
- A version with electronic temperature settings may be available on request
- This unit is also available in a combi version (evaporator+heater)

RK 12 KLIM

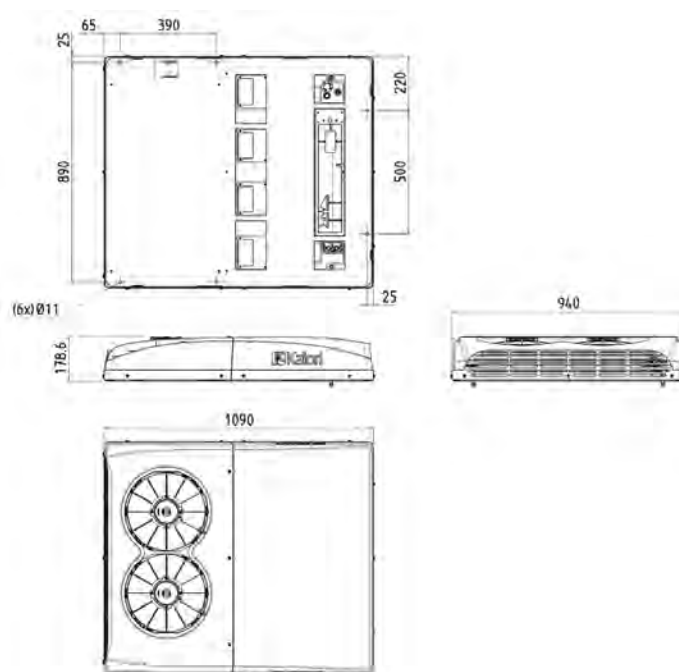
| | |
|-------------------------|----------|
| Cooling output | 11.5 kW |
| Airflow | 950 m³/h |
| Electricity consumption | 650 W |
| Ventilation speed | 3 |

| Voltage | Reference |
|---------|-----------------|
| 12 V | 83.0012.25.0001 |
| 24 V | 83.0012.25.0201 |

RK 14 KLIM

| | |
|-------------------------|-----------|
| Cooling output | 13.5 kW |
| Airflow | 1380 m³/h |
| Electricity consumption | 650 W |
| Ventilation speed | 3 |

| Voltage | Reference |
|---------|-----------------|
| 12 V | 83.0012.26.0001 |
| 24 V | 83.0012.26.0101 |



AIR CONDITIONING - KALORI

RK 12/RK 14 KOMBI

ROOFTOP UNIT

- Air conditioning / heater for minibus or ambulance
- The set includes the evaporator, equipped with a double blower (RK12) or 2 double blowers (RK14), the condenser and the drier filter
- For air diffusion versions - ask for details
- A version with electronic temperature regulation may be available on request
- This unit is also available in an air conditioning version

RK 12 KOMBI

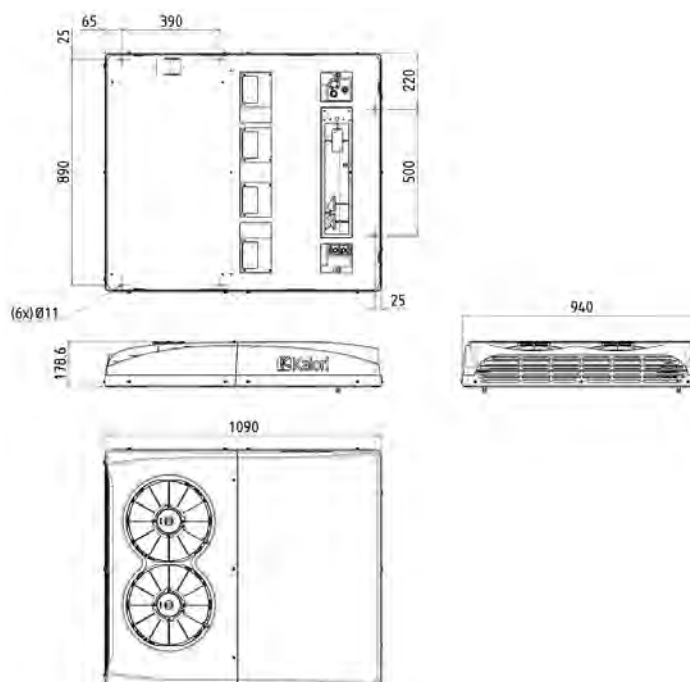
| | |
|-------------------------|----------|
| Heating power | 15 kW |
| Cooling output | 11.5 kW |
| Airflow | 950 m³/h |
| Electricity consumption | 650 W |
| Water connection | Ø 16 mm |
| Ventilation speed | 3 |

| Voltage | Reference |
|---------|-----------------|
| 12 V | 83.0012.25.0003 |
| 24 V | 83.0012.25.0203 |

RK 14 KOMBI

| | |
|-------------------------|-----------|
| Heating power | 19 kW |
| Cooling output | 13.5 kW |
| Airflow | 1380 m³/h |
| Electricity consumption | 920 W |
| Water connection | Ø 16 mm |
| Ventilation speed | 3 |

| Voltage | Reference |
|---------|-----------------|
| 12 V | 83.0012.26.0003 |
| 24 V | 83.0012.26.0203 |



1

1

2

3

4

5

AIR CONDITIONING - KALORI

DIFFUSEUR RK

ROOFTOP UNIT

- Air diffuser for a van or a minibus

RK 12 AIR DIFFUSER

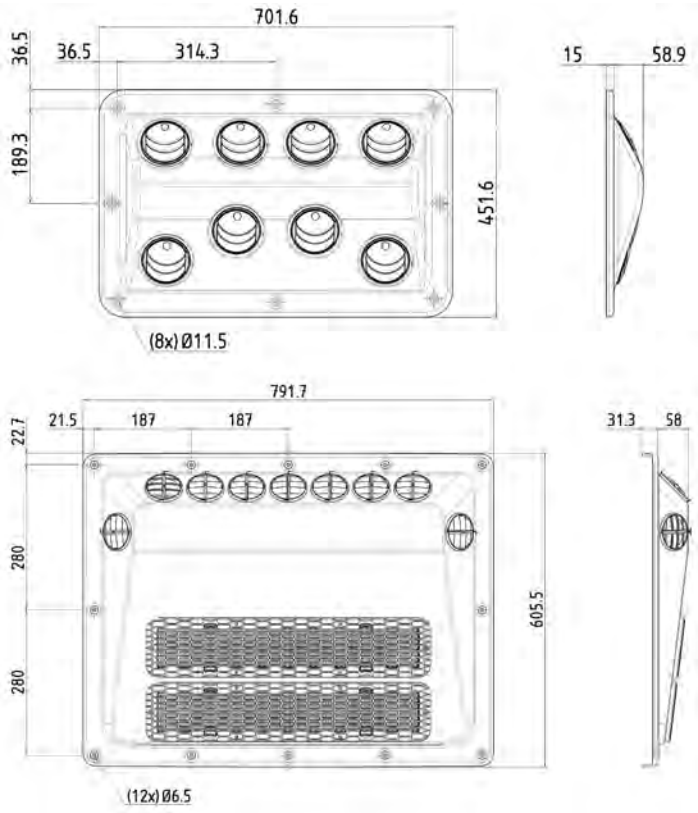
- Diffuser without air recycling

| Reference | Color |
|-----------------|-------|
| 83.0034.01.7011 | Black |

RK 12/RK 14 AIR DIFFUSER

- Air diffuser with 2 recycling grilles and filter
- The filter can be replaced without any tooling

| Reference | Color |
|-----------------|-------|
| 83.0034.00.3014 | Black |



340.17.011



340.17.011



340.03.414



340.03.414

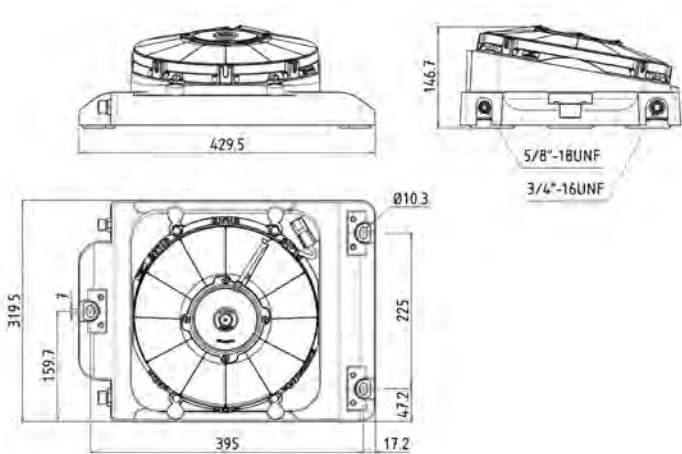
AIR CONDITIONING - KALORI

KD 5 VENTILATED CONDENSER

- Extremely compact condenser with fan, including a drier filter.

| | |
|-------------------------|------|
| Dissipated power | 5 kW |
| Electricity consumption | 90 W |

| Voltage | Reference |
|---------|-----------------|
| 12 V | 83.0012.30.0041 |
| 24 V | 83.0012.30.0141 |



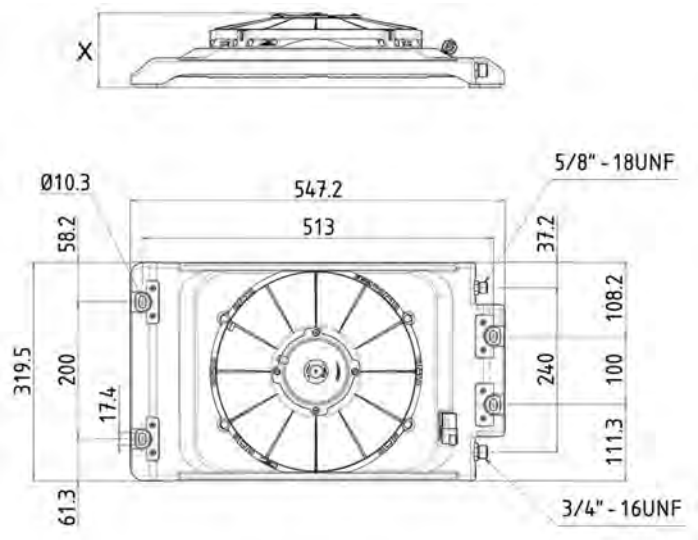
AIR CONDITIONING - KALORI

KD 5.5 & 6

VENTILATED CONDENSER

- Ventilated parallel flow condenser

| Voltage | Reference | Dissipated power | Electricity consumption |
|---------|-----------------|------------------|-------------------------|
| | | KD 5.5 | |
| 12 V | 83.0012.30.0024 | 5.5 kW | 110 W |
| 24 V | 83.0012.30.0124 | | |
| | | KD 6 | |
| 12 V | 83.0012.30.0027 | 6 kW | 120 W |
| 24 V | 83.0012.30.0127 | | |



AIR CONDITIONING - KALORI

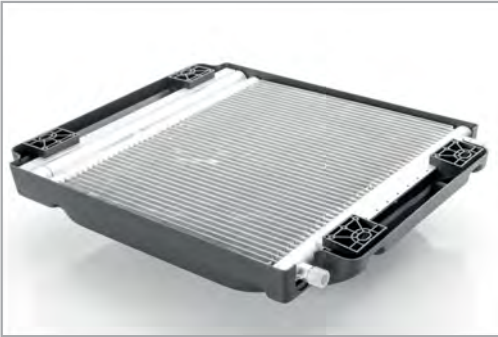
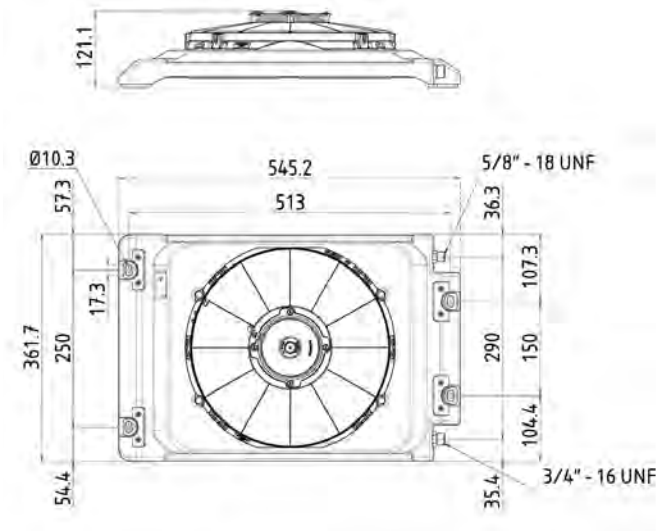
KD 7.5

VENTILATED CONDENSER

- Ventilated parallel flow condenser

| | |
|-------------------------|--------|
| Dissipated power | 7.5 kW |
| Electricity consumption | 110 W |

| Voltage | Reference |
|---------|-----------------|
| 12 V | 83.0012.30.0026 |
| 24 V | 83.0012.30.0126 |



AIR CONDITIONING - KALORI

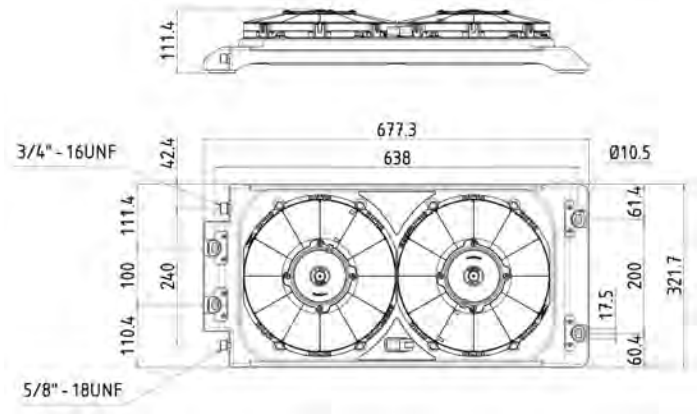
KD DOUBLE 7.5

VENTILATED CONDENSER

- Ventilated parallel flow condenser

| | |
|-------------------------|--------|
| Dissipated power | 7.5 kW |
| Electricity consumption | 228 W |

| Voltage | Reference |
|---------|-----------------|
| 12 V | 83.0012.30.0025 |
| 24 V | 83.0012.30.0125 |



AIR CONDITIONING - KALORI

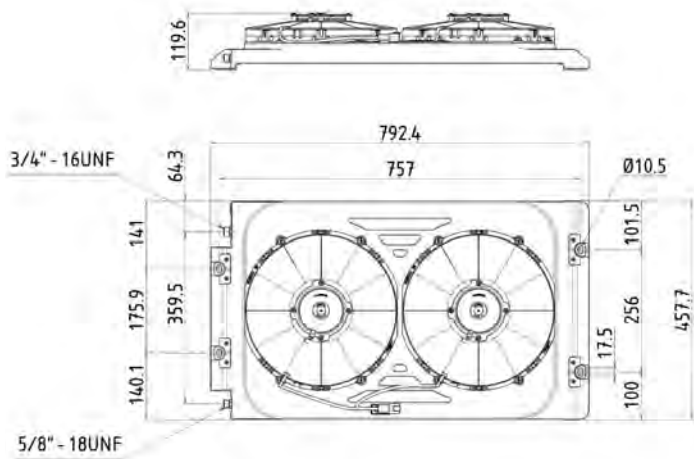
KD 14

VENTILATED CONDENSER

- Ventilated parallel flow condenser

| | |
|-------------------------|-------|
| Dissipated power | 14 kW |
| Electricity consumption | 230 W |

| | |
|---------|-----------------|
| Voltage | Reference |
| 12 V | 83.0012.30.0023 |
| 24 V | 83.0012.30.0123 |



AIR CONDITIONING - KALORI

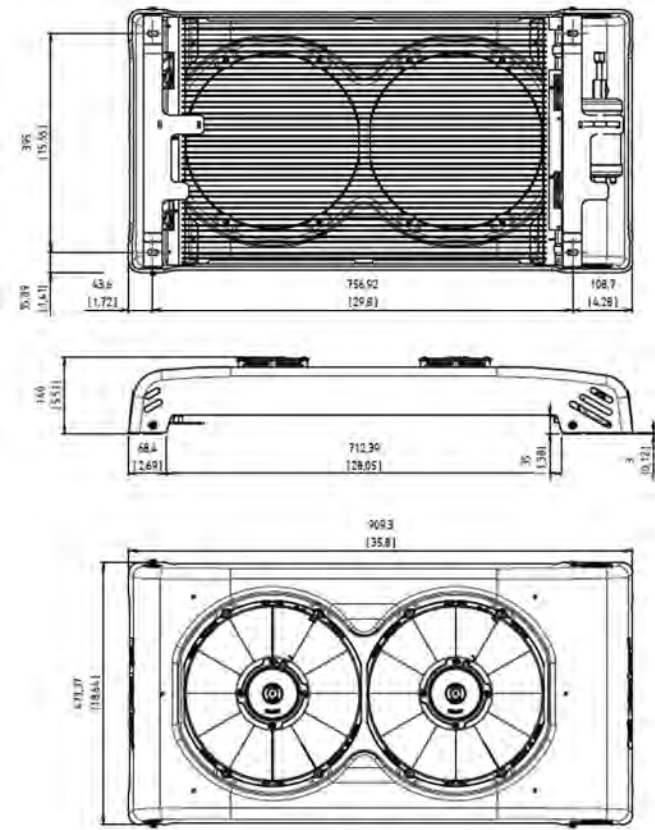
KONDOR 15

VENTILATED CONDENSER

- Ventilated parallel flow condenser including trinary pressure switch and integrated dryer filter.
- Equipped with sealed connectors.

| | |
|-------------------------|-------|
| Dissipated power | 15 kW |
| Electricity consumption | 230 W |

| Voltage | Reference |
|---------|------------------|
| 12 V | 830.0123.00.0510 |
| 24 V | 830.0123.00.1510 |



AIR CONDITIONING - KALORI

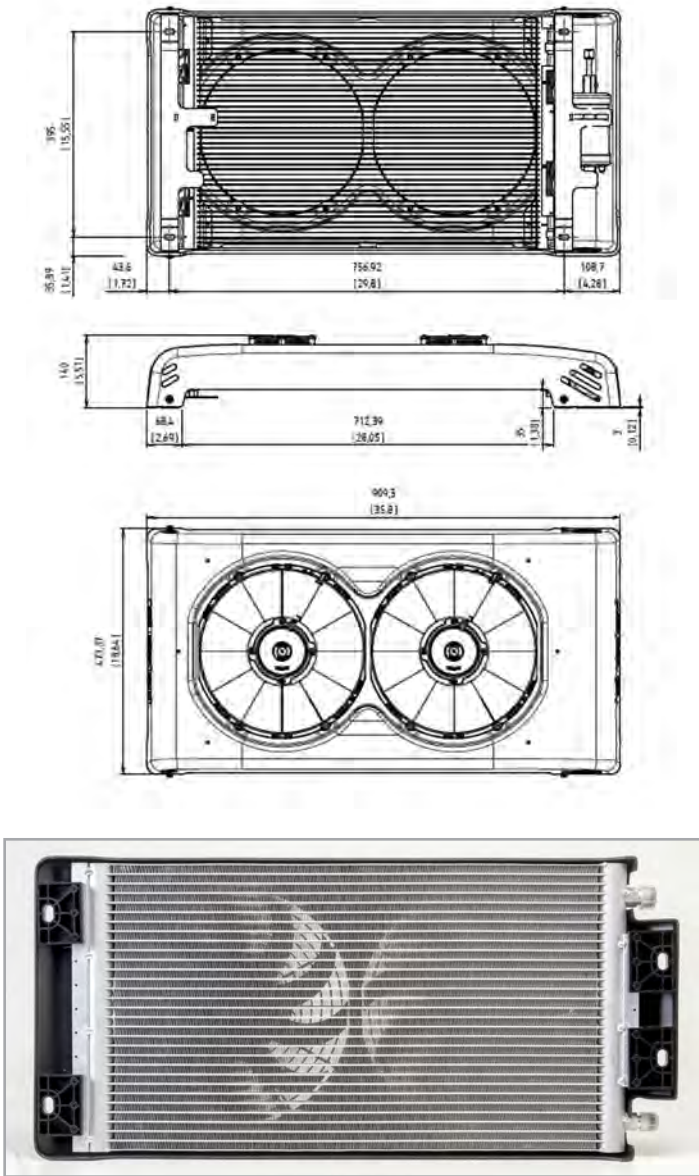
KD 10

VENTILATED CONDENSER

- Ventilated parallel flow condenser

| | |
|-------------------------|-------------------|
| Dissipated power | 35,827.49 BTU/Hr |
| Electricity consumption | 767,731.87 BTU/Hr |

| Voltage | Reference |
|---------|------------------|
| 12 V | 830.0123.00.0510 |
| 24 V | 830.0123.00.1510 |



AIR CONDITIONING - KALORI

SH COMPRESSOR

AIR CONDITIONING ACCESSORIES

| Voltage | Reference | Capacity | Cooling capacity | Voltage range |
|---------|-----------------|----------|------------------|----------------|
| 12 V | 83.0070.00.8320 | 18 CC | 2,2 kW | DC 10 V - 16 V |
| 24 V | 83.0070.00.8321 | 24 CC | 4 kW | DC 20 V - 31 V |



AIR CONDITIONING - KALORI

STANDARD DRIER FILTERS

AIR CONDITIONING ACCESSORIES

Male/Male vertical filter

| Body Ø | Reference | Height | Thread Ø | For |
|----------------|-----------------|--------|---------------|-----------------------------|
| O-RING "V" M/M | | | | |
| 64 mm | 83.0070.00.4005 | 200 mm | 5/8" - 18 UNF | Female high pressure switch |
| 76 mm | 83.0070.00.4001 | 230 mm | 5/8" - 18 UNF | Female high pressure switch |



Male/Female vertical filter

| Body Ø | Reference | Height | Thread Ø | For |
|----------------|-----------------|--------|---------------|-----------------------------|
| O-RING "V" M/F | | | | |
| 64 mm | 83.0070.00.4003 | 200 mm | 5/8" - 18 UNF | Female high pressure switch |

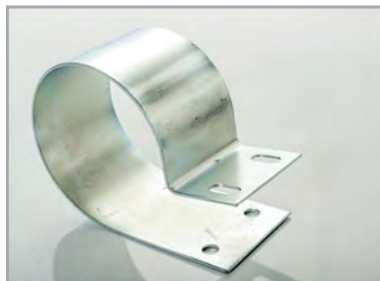


Male/Male horizontal filter

| Body Ø | Reference | Height | Thread Ø | For |
|----------------|-----------------|--------|---------------|-----------------------------|
| O-RING "V" M/M | | | | |
| 80 mm | 83.0070.00.4002 | 260 mm | 5/8" - 18 UNF | Male high pressure switch |
| 80 mm | 83.0070.00.4006 | 260 mm | 5/8" - 18 UNF | Female high pressure switch |



Support / Bracket



| Body Ø | Reference |
|--------|-----------------|
| 76 mm | 83.0070.00.4200 |



| Body Ø | Reference |
|--------|-----------------|
| 64 mm | 83.0070.00.4301 |



| Body Ø | Reference |
|--------|-----------------|
| 76 mm | 83.0070.00.4201 |

1

1

2

3

4

5

AIR CONDITIONING - KALORI

AIR CONDITIONING ACCESSORIES

1/4" Female binary pressure switch



| Reference | Lp Pressure | Hp Pressure | Thread Ø |
|-----------------|-------------|-------------|----------------|
| 83.0070.00.2002 | 2 bar | 25 bar | 7/16" - 20 UNF |
| 83.0070.00.2005 | | 27 bar | |

3/16" Male trinary pressure switch



| Reference | Lp Pressure | Mp Pressure | Hp Pressure | Thread Ø |
|-----------------|-------------|-------------|-------------|---------------|
| 83.0070.00.2001 | 2 bar | 15 bar | 27 bar | 3/8" - 24 UNF |

3/16" Male binary pressure switch



| Reference | Lp Pressure | Hp Pressure | Thread Ø |
|-----------------|-------------|-------------|---------------|
| 83.0070.00.2003 | 2 bar | 25 bar | 3/8" - 24 UNF |

Female binary low pressure switch



| Reference | BP / Lp Pressure | MP / Hp Pressure | Thread Ø |
|-----------------|------------------|------------------|----------------|
| 83.0070.00.2004 | 0.4 bar | 2 bar | 3/8" - 24 UNF |
| 83.0070.00.2006 | 0.35 bar | 2.1 bar | 7/16" - 20 UNF |

1/4" Female trinary pressure switch



| Reference | Lp Pressure | Mp Pressure | Hp Pressure | Thread Ø |
|-----------------|-------------|-------------|-------------|----------------|
| 83.0070.00.2002 | 2 bar | 15 bar | 27 bar | 7/16" - 20 UNF |

AIR CONDITIONING - KALORI

AIR CONDITIONING ACCESSORIES

1.5t Screw-fit expansion valve



| | |
|-----------|-----------------|
| Reference | 83.0070.00.1002 |
|-----------|-----------------|

2t Screw-fit expansion valve



| | |
|-----------|-----------------|
| Reference | 83.0070.00.1001 |
|-----------|-----------------|

1.5t Flanged expansion valve



| | |
|-----------|-----------------|
| Reference | 83.0070.00.1103 |
|-----------|-----------------|

2t Flanged expansion valve



| | |
|-----------|-----------------|
| Reference | 83.0070.00.1000 |
|-----------|-----------------|

Flange on evaporator side



| | |
|-----------|-----------------|
| Reference | 83.0070.00.1100 |
|-----------|-----------------|

Flange on hose side



| | |
|-----------|-----------------|
| Reference | 83.0070.00.1177 |
|-----------|-----------------|

I

1

2

3

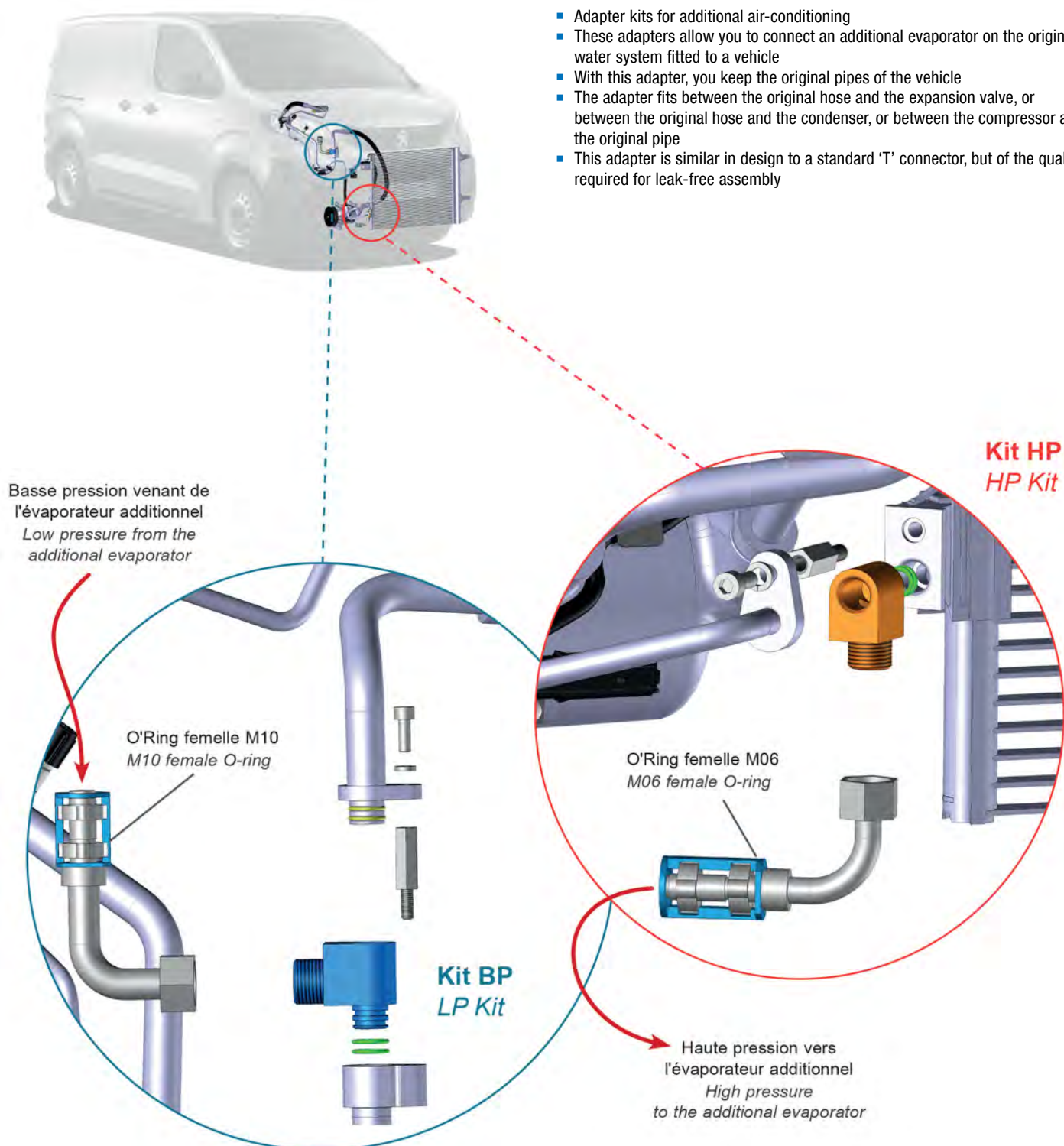
4

5

AIR CONDITIONING - KALORI

ADAPTER KIT FOR ADDITIONAL EVAPORATOR

- Adapter kits for additional air-conditioning
- These adapters allow you to connect an additional evaporator on the original water system fitted to a vehicle
- With this adapter, you keep the original pipes of the vehicle
- The adapter fits between the original hose and the expansion valve, or between the original hose and the condenser, or between the compressor and the original pipe
- This adapter is similar in design to a standard 'T' connector, but of the quality required for leak-free assembly



I

1

2

3

4

5

AIR CONDITIONING - KALORI

ADAPTER KIT FOR ADDITIONAL EVAPORATOR

Mercedes Sprinter adapter kit

- Adapter kit on original hoses for Mercedes Sprinter and Volkswagen Crafter

| | |
|-----------|-----------------|
| Reference | 83.0070.00.1274 |
|-----------|-----------------|



Mercedes Vito & Class V adapter kit

- HP and BP adapters

| | |
|-----------|-----------------|
| Reference | 83.0070.00.1282 |
|-----------|-----------------|



AIR CONDITIONING - KALORI

ADAPTER KIT FOR ADDITIONAL EVAPORATOR

Dodge Promaster rear pre-fit option adapter kit

- HP and LP adapters for Dodge Promaster

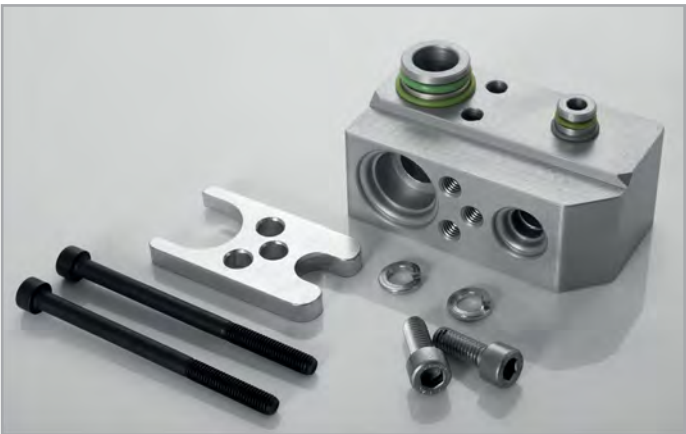
| | |
|-----------|-----------------|
| Reference | 83.0070.00.1168 |
|-----------|-----------------|



Dodge Promaster expansion valve adapter kit

- Expansion valve adapter for Dodge Promaster

| | |
|-----------|-----------------|
| Reference | 83.0070.00.1176 |
|-----------|-----------------|



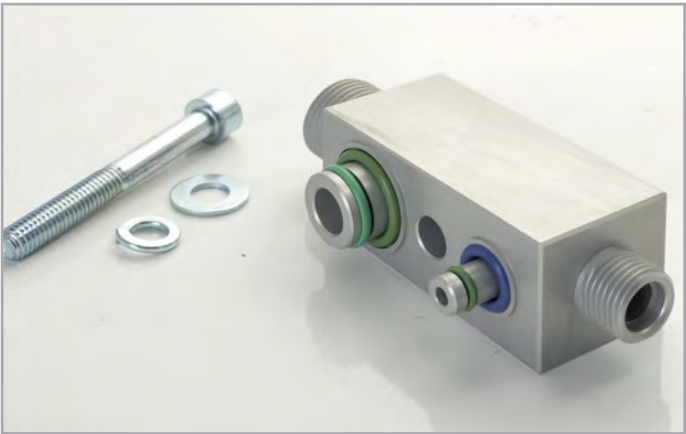
AIR CONDITIONING - KALORI

ADAPTER KIT FOR ADDITIONAL EVAPORATOR

V363, Custom V362 & Connect Ford Transit Custom adapter kit

- Expansion valve adapter kit for Ford Transit Custom

| | |
|-----------|-----------------|
| Reference | 83.0070.00.1272 |
|-----------|-----------------|



Dodge Promaster City

- Expansion valve adapter kit for Dodge Promaster City Combo Cargo

| | |
|-----------|-----------------|
| Reference | 83.0070.00.1217 |
|-----------|-----------------|



Semi-hermetic electric compressor and 10S15 & 17C Denso adapter kit

| | |
|-----------|-----------------|
| Reference | 83.0070.00.1250 |
|-----------|-----------------|



AIR CONDITIONING - KALORI

AIR CONDITIONING ACCESSORIES

REGULATION

Standard mechanical thermostat



| | |
|-----------|-----------------|
| Reference | 83.0070.00.3000 |
|-----------|-----------------|

Electronic adjustable thermostat



With: - temperature sensor - 6 pin connector + pins

| | | |
|---------------------------|------------------|----------------------|
| Consumption / Consumption | | 4 A |
| Voltage | Reference | Version |
| | 83.0070.01.1.200 | With adjustment axle |
| 2 bar | 83.0070.01.1.201 | Internal adjustment |

Air-conditioning solenoid



| | | |
|---------|-----------------|-------------|
| Voltage | Reference | Consumption |
| 12 V | 83.0070.00.3050 | 0.85 A |
| 24 V | 83.0070.00.3051 | 0.52 A |

Electronic cooling and heating control



| | | |
|-------------|-----------------|-------------|
| Voltage | Reference | Consumption |
| 12 V - 24 V | 83.0070.01.1002 | 4 A |

PRESSURIZATION - KALORI

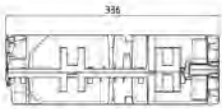
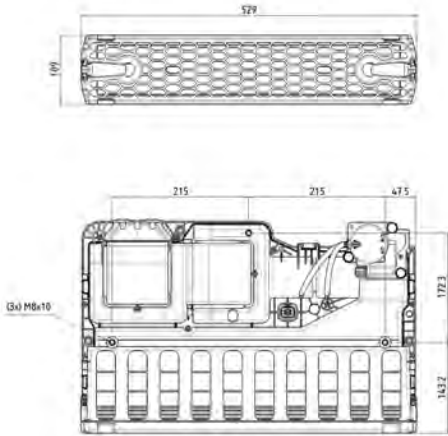
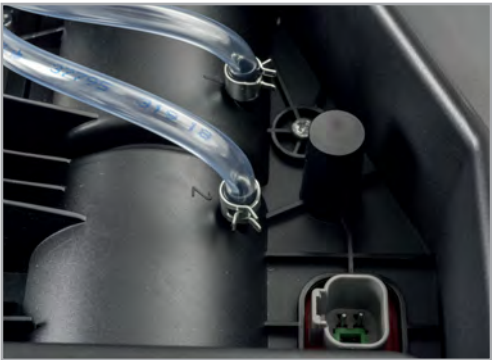
K PROTEC

EVAPORATOR

- The 'K Protec' is a pressurization system compliant with EN 15695.
- It guarantees a minimum overpressure of 20 Pa and a minimum fresh airflow of 30 m3/h
- Supplied with a Ø55 straight air connector and a Ø55 90° air connector

| | |
|-------------------------|---------------|
| Airflow | 30 to 90 m³/h |
| Electricity consumption | 50 W |

| Voltage | Reference | Cab pressure sensor | Air filter type |
|-----------|-----------------|---------------------|-----------------|
| Version 4 | | | |
| 12 V | 83.0012.17.0000 | Electronic | 4 |
| 24 V | 83.0012.17.0100 | | |
| 12 V | 83.0012.17.0002 | Mechanical | |
| 24 V | 83.0012.17.0102 | | |
| Version 2 | | | |
| 12 V | 83.0012.17.0001 | Mechanical | 2 |
| 24 V | 83.0012.17.0101 | | |



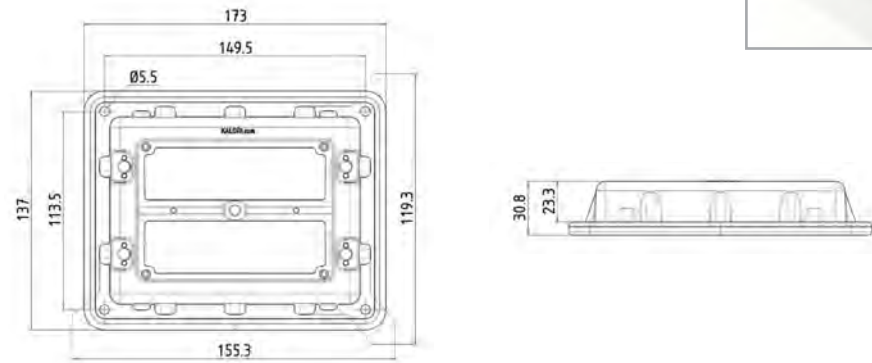
PRESSURIZATION - KALORI

PRESSURIZATION

Overpressure valve for pressurized cabin

- Guarantees easy closure of the doors by quickly releasing the pressure created by the rapid closure of a door.
- The valves then close to protect the cab against particles and allow pressurization of the cabin up to 100 Pa. The valve can be calibrated for other pressures on request.
- Depending on the size of the door, several valves may be required (generally 2)

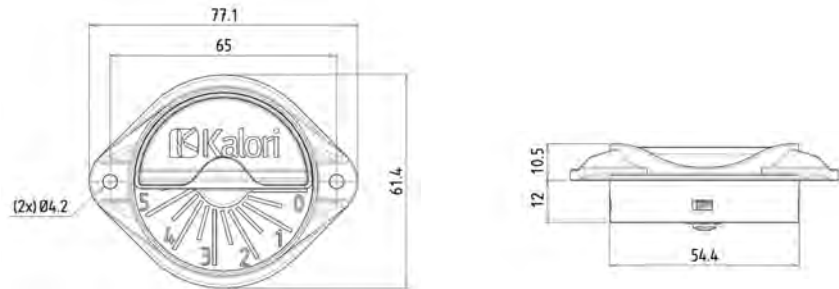
| | |
|-----------|-----------------|
| Reference | 83.0034.00.8068 |
|-----------|-----------------|



Leak generator

Controlled leak generator for pressurized cabins: Cabins are increasingly airtight, sometimes with a regulatory 30 m³/h airflow (EN15695), the internal cabin pressure is too high. Install the glove box shutter, connect PCK control panel with the PCK management software, enter the desired value of 30 m³/h on your screen, and adjust the louver opening until you get 20Pa pressure. That's all; your cabin complies strictly to standard EN15695 values! A device to use for end of vehicle production controls!

| | |
|-----------|-----------------|
| Material | PA 6.6 + GB30 |
| Reference | 83.0034.00.8068 |



Can be fitted with connectors of Ø 50 mm, Ø 40 mm, Ø 20 mm

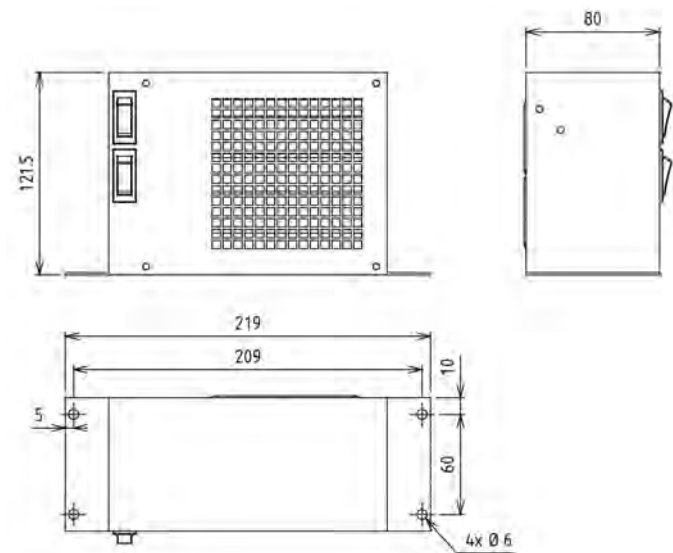


ELECTRIC HEATERS - KALORI

MINIKELEC

ELECTRIC HEATER

- Electric heater with secured PTC element, can be used to ventilate without heating
- Small volume
- This heater is ideal for forklift truck or other electric vehicles



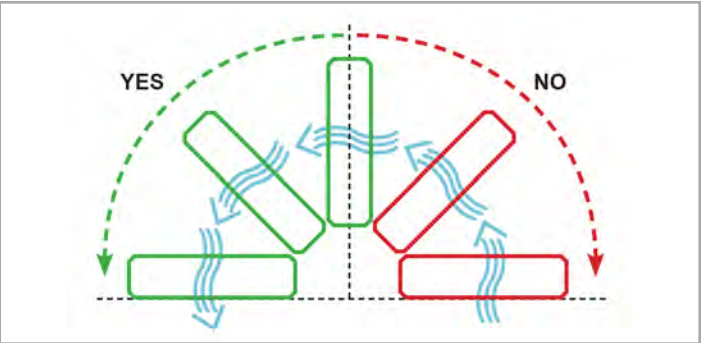
| | |
|-------------|---------|
| Airflow | 70 m³/h |
| Noise level | 48 dB |
| Weight | 1.45 kg |

| Heating element voltage | Ventilation | Reference | Electrical consumption | Electrical power |
|-------------------------|-------------|-----------------|------------------------|------------------|
| 80 V | 12 V | 83.0012.23.0300 | 12 A | 900 W |
| 48 V | 12 V | 83.0012.03.0310 | 20 A | 900 W |
| 24 V | 24 V | 83.0012.03.0320 | 32 A | 750 W |
| 12 V | 12 V | 83.0012.03.0330 | 35 A | 420 W |

Recommendation: Heater must be protected against humidity and dust - fit an air filter upstream of the inlet fan.



Installation instructions:



The heating unit must not be installed with the airflow directed upwards.

ELECTRIC HEATERS - KALORI

MINIKELEC

ELECTRIC HEATER

- Electric heater with secured PTC element
- Equipped with a safety thermal switch
- Other power levels available on request
- Use Ø55mm ducts and Kalori air distribution louvers on the four front-panel connectors.
- The outlets may be stopped if necessary
- One side of the fan may be ducted to supply fresh air from outside, for example
- A front panel with motorized or cable-controlled flaps is also available from the Catalogue, See Pagepage 119
- Available in a water heater version

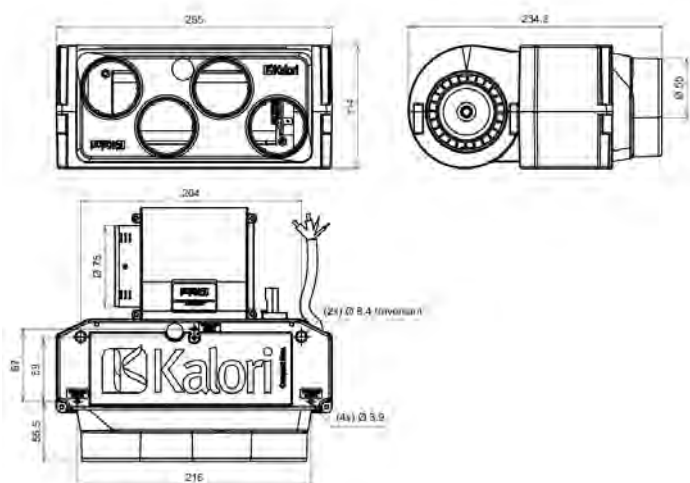


ED4



G

Recommendation: Heater must be protected against humidity and dust - install an air filter upstream of the inlet fan.



| | |
|-------------------|----------|
| Airflow | 230 m³/h |
| Noise level | 63 dB |
| Ventilation speed | 3 kg |

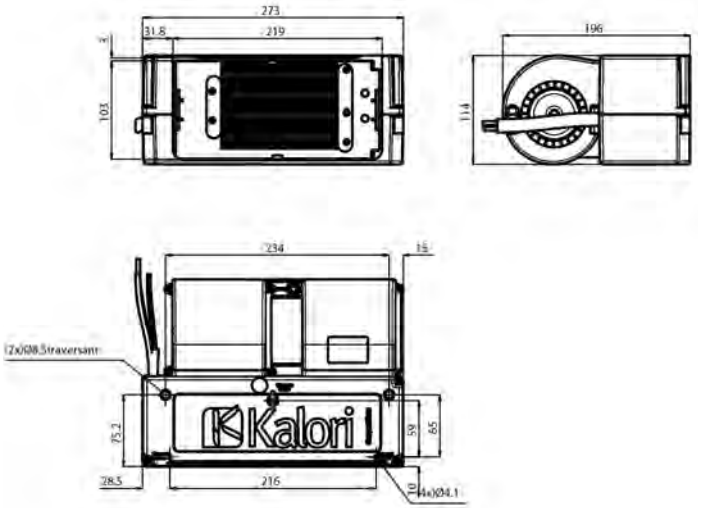
| Heating element voltage | Ventilation | Reference | Electrical consumption | Electrical power |
|--------------------------|-------------|-----------------|------------------------|------------------|
| Kelec EV01 ED4 (Ø 55 mm) | | | | |
| 24 V | 12 V | 83.0012.03.3101 | 71 A | 1700 W |
| 48 V | | 83.0012.03.3201 | 36 A | 1700 W |
| 48 V | | 83.0012.03.3211 | 18 A | 850 W |
| 80 V | | 83.0012.03.3301 | 22 A | 1700 W |
| 80 V | | 83.0012.03.3311 | 11 A | 850 W |
| 24 V | 24 V | 83.0012.03.3401 | 74 A | 1700 W |
| 24 V | | 83.0012.03.3411 | 39 A | 850 W |
| 80 V | | 83.0012.03.3601 | 22 A | 1700 W |
| Kelec EV01 G | | | | |
| 24 V | 24 V | 83.001203.3402 | 74 A | 1700 W |
| 80 V | | 83.0012.03.3602 | 22 A | |
| 80 V | 12 V | 83.0012.03.3302 | 11 A | 850 W |

ELECTRIC HEATERS - KALORI

KELEC EV02 E

ELECTRIC HEATER

- Electric heater with secured PTC heater element
- Equipped with 2 double fans for improved airflow, along with a safety thermal switch
- Other power levels available on request
- Available in a water heater version



Recommendation: Heater must be protected against humidity and dust - install an air filter upstream of the inlet fan.

| | |
|-------------------|----------|
| Airflow | 350 m³/h |
| Noise level | 65 dB |
| Ventilation speed | 3 |

| Heating voltage | Ventilation voltage | Reference | Electrical consumption | Electrical power |
|-----------------|---------------------|-----------------|------------------------|------------------|
| 24 V | 24 V | 83.0012.03.4100 | 71 A | 1700 W |
| 48 V | | 83.0012.03.4200 | 36 A | 1700 W |
| 80 V | | 83.0012.03.4300 | 22 A | 1700 W |
| 24 V | | 83.0012.03.4400 | 74 A | 1700 W |
| 48 V | | 83.0012.03.4500 | 36 A | 1700 W |
| 80 V | 24 V | 83.0012.03.4600 | 22 A | 1700 W |
| 80 V | | 83.0012.03.4610 | 11 A | 850 W |
| 300 V | | 83.0012.03.4650 | 7 A | 2200 W |
| | 12 V | | | |

ELECTRIC HEATERS - KALORI

KELEC EVO2

ELECTRIC HEATER

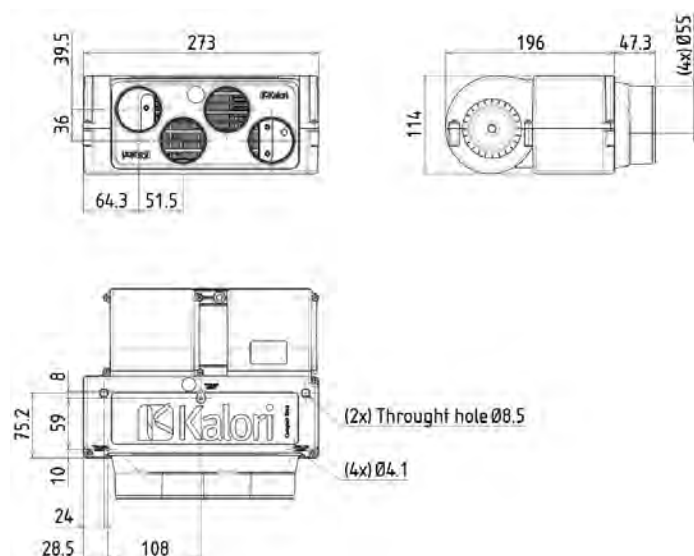
- Electric heater with secured PTC heater element
- Equipped with 2 double fans for increased airflow, along with a safety thermal switch
- Other power levels available on request
- Use Ø55mm ducts and Kalori air distribution louvers on the four front connectors
- Connectors may be stopped if necessary
- A motorized or cable-controlled front panel is also available from this catalogue - See Ppage 119
- Available in a water heater version



ED4



G



| | |
|-------------------|----------|
| Airflow | 350 m³/h |
| Noise level | 65 dB |
| Ventilation speed | 3 |

Recommendation : Heater must be protected against humidity and dust - install an air filter upstream of the inlet fan.

| Heating voltage | Ventilation voltage | Reference | Electrical consumption | Electrical power |
|--------------------------|---------------------|-----------------|------------------------|------------------|
| Kelec EVO2 ED4 (Ø 55 mm) | | | | |
| 24 V | 24 V | 83.0012.03.4101 | 71 A | 1700 W |
| 48 V | | 83.0012.03.4201 | 36 A | 1700 W |
| 48 V | | 83.0012.03.4211 | 18 A | 850 W |
| 80 V | | 83.0012.03.4301 | 22 A | 1700 W |
| 80 V | | 83.0012.03.4311 | 11 A | 850W |
| 80 V | 24 V | 83.0012.03.4601 | 22 A | 1700 W |
| 120 V | 12 V | 83.0012.03.4401 | 18 A | 2200 W |
| 24 V | 24 V | 83.0012.03.4404 | 74 A | 1700 W |
| 24 V | | 83.0012.03.4411 | 39 A | 850 W |
| Kelec EVO2 ED4 (Ø 55 mm) | | | | |
| 24 V | 24 V | 83.0012.03.4405 | 74 A | 1700 W |
| 80 V | | 83.0012.03.4602 | 22 A | 1700 W |
| 300 V | 12 V | 83.0012.03.4302 | 22 A | 1700 W |

ELECTRIC HEATERS - KALORI

ED2/ED3 AIR DIFFUSER

HEATING ACCESSORIES

- Diffuser outlet panels suitable for Kelec Evo1 and Evo2, Compact Evo1 and Evo2 heaters
- They can be easily installed, without tools, into the two lateral slides on the heater, a clip holds them securely
- Several \varnothing of couplings can be used, for various \varnothing of duct on ED2 diffuser outlets
- These fittings do not require collars to hold in place the ducts



340.07.981

| \varnothing screw-fit connector | Reference | Version |
|-----------------------------------|-----------------|---|
| 60 mm | 83.0034.00.7981 | ED3 front |
| - | 83.0034.00.7980 | Face ED2 front without connector |
| 60 mm | 83.0034.00.8357 | Chose your connectors to screw on to the ED2 air diffuser |
| 65 mm | 83.0034.00.8358 | |
| 70 mm | 83.0034.00.8359 | |
| 75 mm | 83.0034.00.8360 | |
| - | 83.0034.00.7982 | ED3 front without connector |
| 40 mm | 83.0034.00.8340 | Chose your connectors to screw on to the ED3 air diffuser |
| 45 mm | 83.0034.00.8345 | |
| 50 mm | 83.0034.00.8350 | |
| 55 mm | 83.0034.00.8355 | |
| 55 mm / 90° | 83.0034.00.8356 | |

Screw

| | |
|----------------|-----------------|
| 3,5 x 12 screw | 83.0034.00.5087 |
|----------------|-----------------|



ED2 avec raccords / ED2 with connectors



340.08.356

de / from \varnothing 40 mm
à / to \varnothing 70 mm

1

1

2

3

4

5

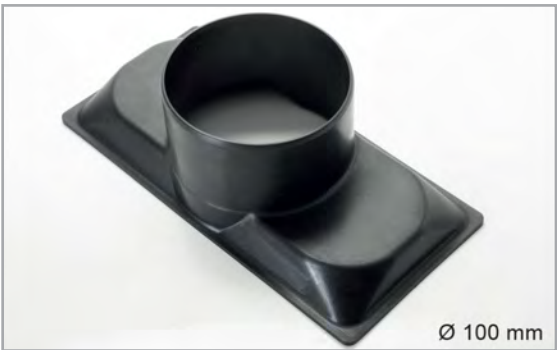
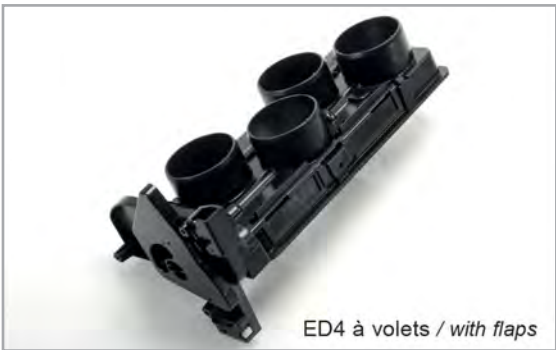
ELECTRIC HEATERS - KALORI

AIR DEFFUSER

HEATING ACCESSORIES

- Diffuser outlets suitable for Kelec Evo1 and Evo2, Compact Evo1 and Evo2 heaters
- They can be easily installed, without tools, using the two lateral slides on the heater, a clip holds them securely

| Reference | Version |
|-----------------|--------------------------|
| 83.0034.00.7432 | G |
| 83.0034.00.3412 | KC |
| 83.0034.00.7392 | ED4 (Ø 55 mm) |
| 83.0034.00.7979 | Ø 100 mm |
| 83.0034.00.7095 | ED4 (Ø 55 mm) with flaps |

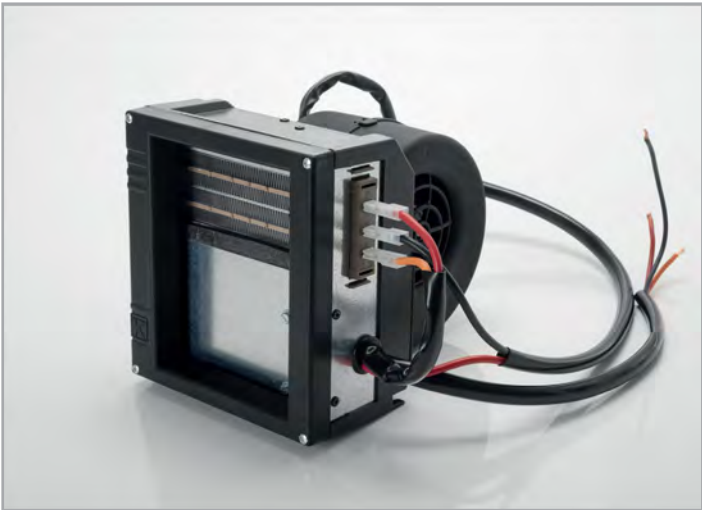
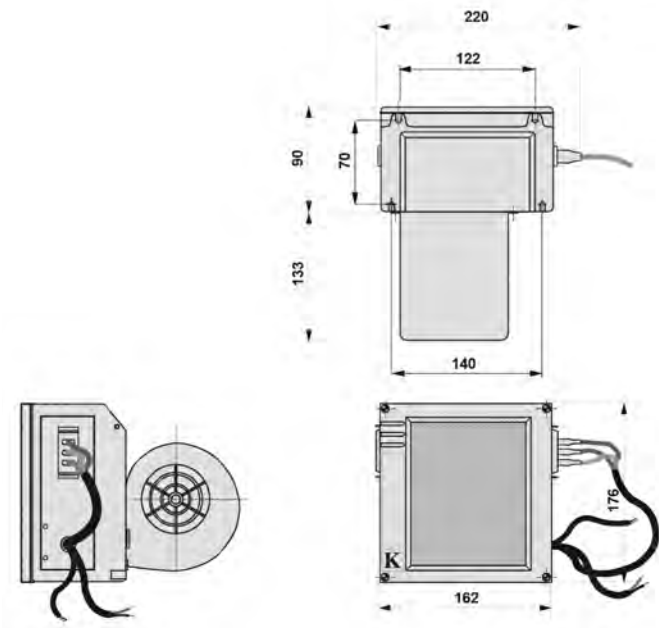


ELECTRIC HEATERS - KALORI

AK ELEC

ELECTRIC HEATER

- Electric heater with secured PTC resistance
- It is equipped with a safety thermal switch
- Other powers can be available on request
- 2 heating powers controlled by an integrated relay
- Available in a water heater version



Recommendation: Heater must be protected against humidity and dust - install an air filter upstream of the inlet fan.

| | |
|-------------------|---------|
| Airflow | 70 m³/h |
| Noise level | 48 dB |
| Weight | 1.45 kg |
| Ventilation speed | 3 |

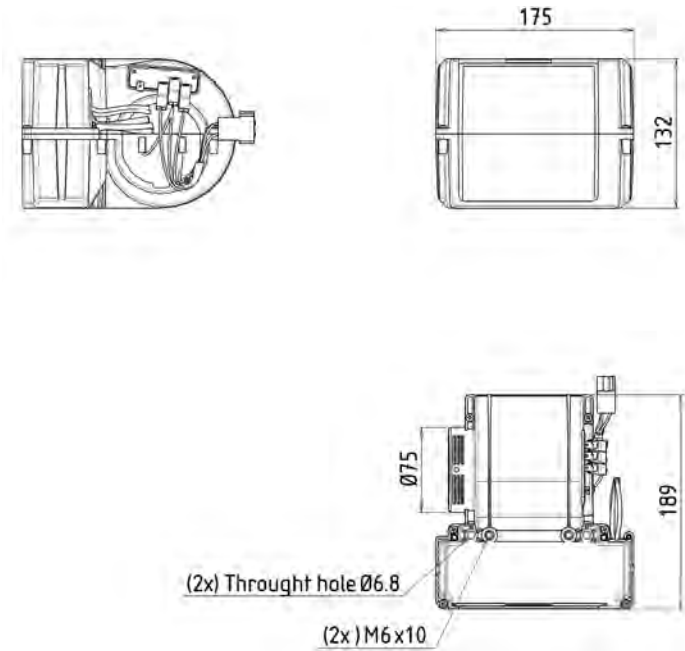
| Resistance voltage | Ventilation voltage | Reference | Electrical consumption | Electrical power |
|--------------------|---------------------|-----------------|------------------------|------------------|
| 24 V | 24 V | 83.0012.03.0200 | 600 W | 1200 W |
| 48 V | 12 V | 83.0012.03.0201 | 800 W | 1400 W |
| 72 V | 12 V | 83.0012.03.0202 | 780 W | 1240 W |

ELECTRIC HEATERS - KALORI

ALIZE 2 ELEC

ELECTRIC HEATER

- It is the smallest heater fitted with an electrical heating element
 - Electric heater with secured PTC element
 - It is equipped with a safety thermal switch
 - Other power levels available on request
 - It is possible to duct the fan side to draw in fresh air from outside, for example.
- Available in a water heater version



Recommendation: Heater must be protected against humidity and dust - fit an air filter upstream of the inlet fan.

| | |
|-------------------|-----------|
| Airflow | 2100 m³/h |
| Ventilation speed | 3 |

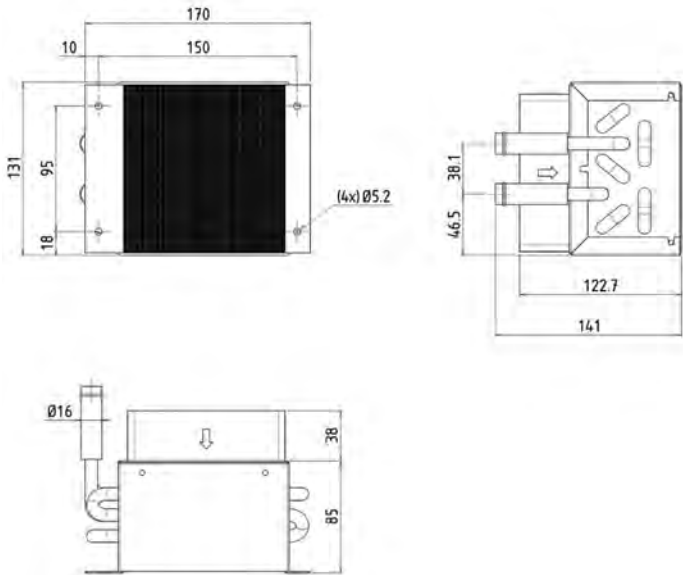
| Heating element voltage | Ventilation | Reference | Electrical consumption | Electrical power |
|-------------------------|-------------|-----------------|------------------------|------------------|
| Alizé 2 E Elec | | | | |
| 48 V | 12 V | 83.0012.03.6001 | 33 A | 1600 W |
| 80 V | | 83.0012.03.6003 | 28 A | 2200 W |
| 96 V | | 83.0012.03.6005 | 23 A | |
| 120 V | | 83.0012.03.6007 | 18 A | |
| 96 V | 24 V | 83.0012.03.6105 | 23 A | |
| 120 V | | 83.0012.03.6107 | 18 A | |
| Alizé 2 E Elec | | | | |
| 48 V | 12 V | 83.0012.03.6008 | 33 A | 1600 W |
| 80 V | | 83.0012.03.6108 | 28 A | 2200 W |

WATER HEATER - KALORI

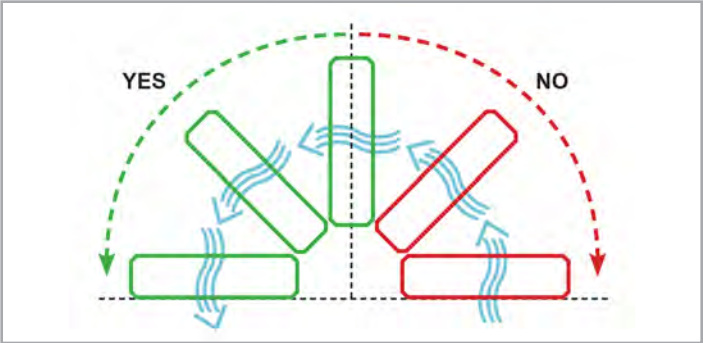
SILENCIO 1

WATER HEATER

- Water heat-exchanger for caravan, motorhome or boat
- Installed in a bulkhead, can be connected to the engine cooling circuit or to an autonomous gas or diesel-powered heater
- Equipped with a noiseless, low power consumption, fan.



Installation instructions:



The heating unit must not be installed with the airflow directed upwards.

| | |
|------------------------|-------------|
| Calorific power | 1500 Kcal/h |
| Heating power | 1.7 kW |
| Airflow | 110 m³/h |
| Electrical consumption | 7 W |
| Noise level | 48 dB |
| Weight | 1 kg |
| Water fitting | Ø 16 mm |
| Ventilation speed | 2 |

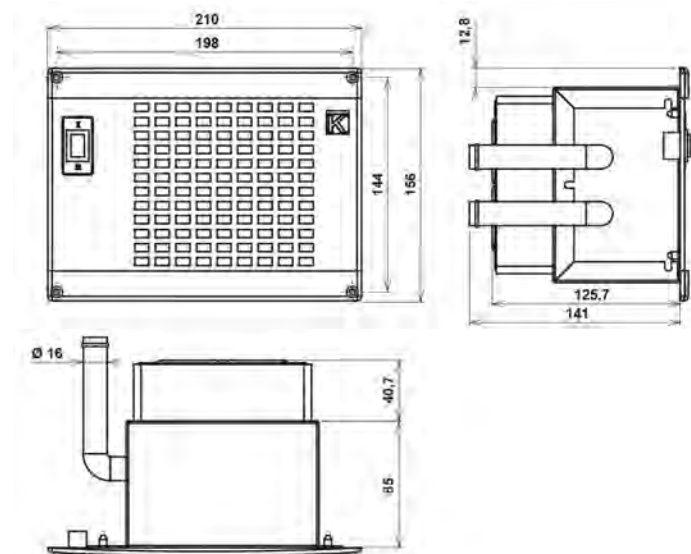
| Voltage | Reference |
|---------|-----------------|
| 12 V | 83.0012.01.4057 |
| 24 V | 83.0012.01.4157 |

WATER HEATER - KALORI

SILENCIO FAI

WATER HEATER

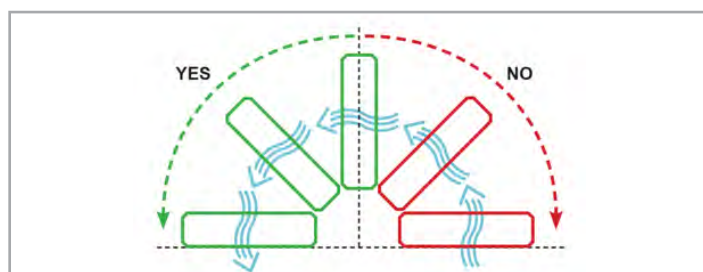
- Water heat-exchanger for caravan, motorhome or boat
- Installed in a bulkhead, can be connected to the engine cooling circuit or to an autonomous gas or diesel-powered heater
- Noiseless, low power consumption fan.
- It is available without fan control knob (Silencio FA version)



| | |
|------------------------|-------------|
| Calorific power | 1500 Kcal/h |
| Heating power | 1.7 kW |
| Airflow | 110 m³/h |
| Electrical consumption | 7 W |
| Noise level | 48 dB |
| Weight | 1 kg |
| Water fitting | Ø 16 mm |
| Ventilation speed | 2 |

| Voltage | Reference | Colour |
|---------|-----------------|--------|
| 12 V | 83.0012.01.4081 | Black |
| 24 V | 83.0012.01.4181 | Black |
| 12 V | 83.0012.01.4082 | Grey |
| 24 V | 83.0012.01.4182 | Grey |

Installation instructions:



The heating unit must not be installed with the airflow directed upwards.

1

1

2

3

4

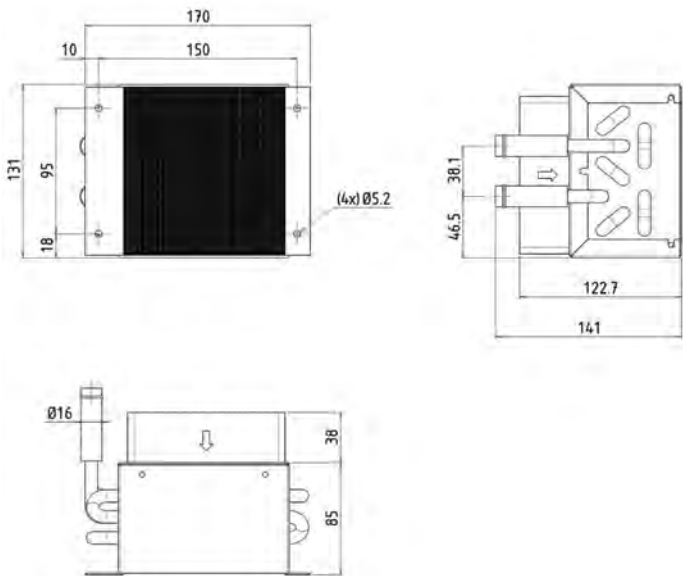
5

WATER HEATER - KALORI

SILENCIO 2

WATER HEATER

- Water heat-exchanger for caravan, motorhome or boat, minibus or ambulance
- Installed in a wall, can be connected to the engine cooling circuit or to an autonomous gas or diesel-powered heater
- Equipped with a noiseless, low power consumption fan

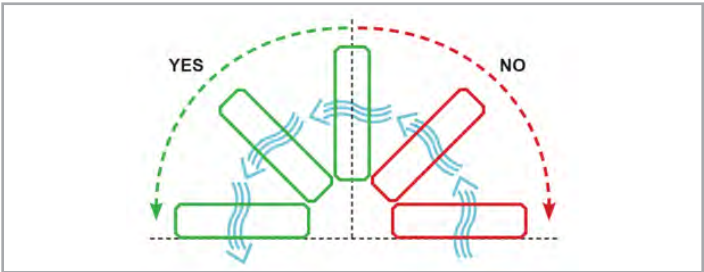


| | |
|------------------------|----------|
| Heating power | 5.5 kW |
| Airflow | 250 m³/h |
| Electrical consumption | 16 W |
| Noise level | 48 dB |
| Weight | 2 kg |
| Water fitting | Ø 16 mm |
| Ventilation speed | 2 |

| Voltage | Reference | Colour |
|---------|-----------------|--------|
| 12 V | 83.0012.01.4030 | Black |
| 24 V | 83.0012.01.4130 | |



Installation instructions:



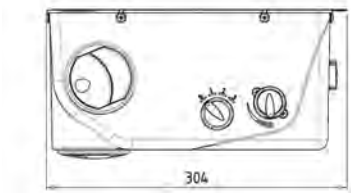
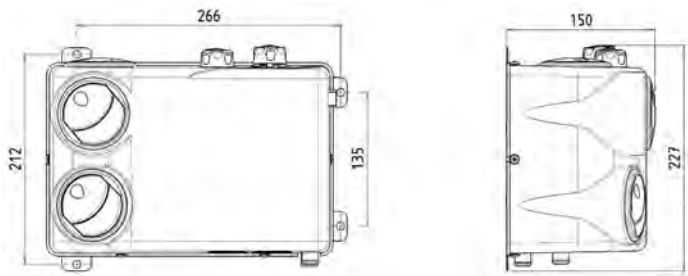
The heating unit must not be installed with the airflow directed upwards.

WATER HEATER - KALORI

ALIZE 2 VI HORIZONTAL

WATER HEATER

- Water heat-exchanger for mini excavator
- To be connected to the engine cooling circuit and to a power supply
- Water valve and ventilation switch included



| | |
|-------------------|----------|
| Heating power | 3.8 kW |
| Airflow | 212 m³/h |
| Electrical power | 40 W |
| Weight | 3 kg |
| Water fitting | Ø 16 mm |
| Ventilation speed | 3 |

| Voltage | Reference |
|---------|-----------------|
| 12 V | 83.0012.01.4304 |
| 24 V | 83.0012.01.4404 |



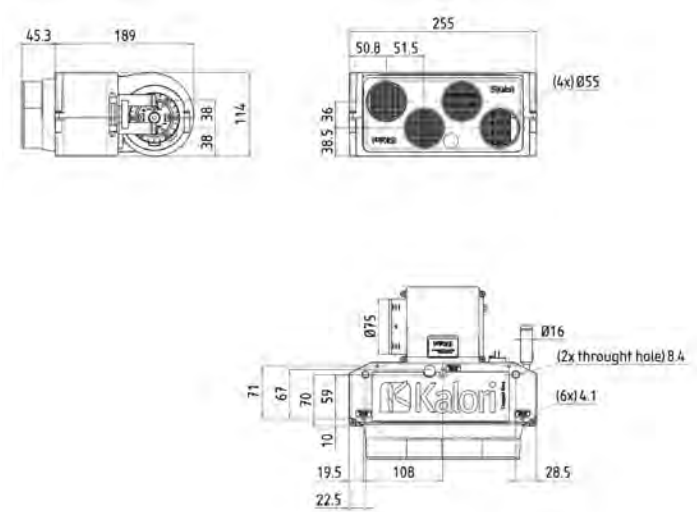
WATER HEATER - KALORI

COMPACT EV01

WATER HEATER

Water heat-exchanger equipped with a noiseless blower. Ideal for mini-cars (without driving license), small handling or construction equipment. A connector is fitted for installation of an outside air suction duct on to a fan inlet. For an automotive installation, use the EV01 ED4 Compact version with 4 air ducts and air vents.

The diffuser outlets can easily be installed without tools, using the two lateral slides on the heater, with a clip holding them securely in place. Also available in an electric version for electrically-driven vehicles



| | |
|------------------------|----------|
| Heating power | 4.3 kW |
| Airflow | 230 m³/h |
| Electrical consumption | 70 W |
| Noise level | 63 dB |
| Weight | 2.2 kg |
| Water fitting | Ø 16 mm |
| Ventilation speed | 3 |

| Voltage | Reference |
|----------------------|-----------------|
| Compact EV01 ED4 Ø55 | |
| 12 V | 83.0012.03.2001 |
| 24 V | 83.0012.03.2101 |
| Compact EV01 G | |
| 12 V | 83.0012.03.2002 |
| 24 V | 83.0012.03.2102 |
| Compact EV01 KC | |
| 12 V | 83.0012.03.2013 |
| 24 V | 83.0012.03.2113 |
| Compact EV01 Ø100 | |
| 12 V | 83.0012.03.2015 |
| 24 V | 83.0012.03.2115 |

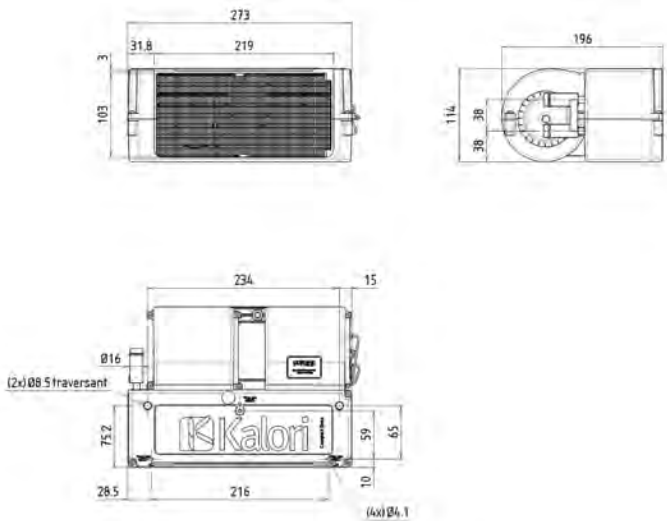


WATER HEATER - KALORI

MINIKELEC

ELECTRIC HEATER

- Water heat-exchanger
- Identical to Compact EVO1 heater but more power, with its 3-speed double ventilator, it can be installed in place of a Compact EVO1 when the latter lacks power
- It is ideal for mini-cars (without driving license), small handling or construction equipment
- It is equipped with two noiseless fans
- It is also available in an electric version for electrically-powered vehicles



| | |
|------------------------|----------|
| Heating power | 5.2 kW |
| Airflow | 350 m³/h |
| Electrical consumption | 1000 W |
| Noise level | 65 dB |
| Weight | 2.5 kg |
| Water fitting | Ø 16 mm |
| Ventilation speed | 3 |

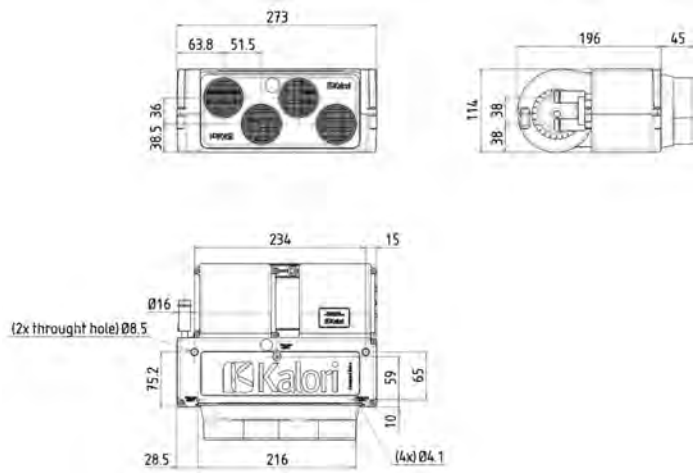
| Voltage | Reference |
|---------|-----------------|
| 12 V | 83.0012.02.7001 |
| 24 V | 83.0012.02.7101 |

WATER HEATER - KALORI

COMPACT EV02

WATER HEATER

Water heat-exchanger equipped with a noiseless blower. Ideal for mini-cars (without driving license), small handling or construction equipment. A connector is fitted for installation of an outside air suction duct on to a fan inlet. For an automotive installation, use the EV01 ED4 Compact version with 4 air ducts and air vents. The diffuser outlets can easily be installed without tools, using the two lateral slides on the heater, with a clip holding them securely in place. Also available in an electric version for electrically-driven vehicles



| | |
|------------------------|----------|
| Heating power | 5.2 kW |
| Airflow | 350 m³/h |
| Electrical consumption | 100 W |
| Noise level | 65 dB |
| Weight | 2.5 kg |
| Water fitting | Ø 16 mm |
| Ventilation speed | 3 |

| Voltage | Reference |
|---------------------------|-----------------|
| Compact EV01 ED4 (Ø55 mm) | |
| 12 V | 83.0012.02.7002 |
| 24 V | 83.0012.02.7102 |
| Compact EV01 G | |
| 12 V | 83.0012.02.7006 |
| 24 V | 83.0012.02.7106 |
| Compact EV01 KC | |
| 12 V | 83.0012.02.7013 |
| 24 V | 83.0012.02.7113 |
| Compact EV01 (Ø100 mm) | |
| 12 V | 83.0012.02.7015 |
| 24 V | 83.0012.02.7115 |



WATER HEATER - KALORI

ED2/ED3 AIR DIFFUSER

HEATING ACCESSORIES

- Diffuser outlets suitable for Kelec Evo1 and Evo2, Compact Evo1 and Evo2 heaters
- They can be easily installed without tools, using the two lateral slides on the heater, with a clip holding them securely in place
- Possibility of using several Ø couplings for various Ø of duct on the ED2 diffuser outlets
- These fittings do not require collars to hold the duct in place

| Ø screw-fit connector | Reference | Version |
|-----------------------|-----------------|---|
| 60 mm | 83.0034.00.7981 | ED3 front |
| - | 83.0034.00.7980 | Face ED2 front without connector |
| 60 mm | 83.0034.00.8357 | Chose your connectors to screw on to the ED2 air diffuser |
| 65 mm | 83.0034.00.8358 | |
| 70 mm | 83.0034.00.8359 | |
| 75 mm | 83.0034.00.8360 | |
| - | 83.0034.00.7982 | ED3 front without connector |
| 40 mm | 83.0034.00.8340 | Chose your connectors to screw on to the ED3 air diffuser |
| 45 mm | 83.0034.00.8345 | |
| 50 mm | 83.0034.00.8350 | |
| 55 mm | 83.0034.00.8355 | |
| 55 mm / 90° | 83.0034.00.8356 | |

| Screw | |
|----------------|-----------------|
| 3,5 x 12 screw | 83.0034.00.5087 |



ED2 avec raccords / ED2 with connectors



de / from Ø 40 mm
à / to Ø 70 mm

1

1

2

3

4

5

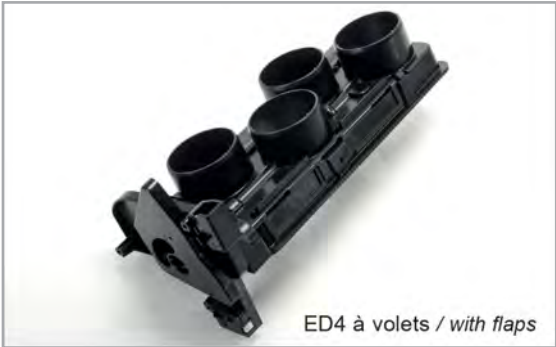
WATER HEATER - KALORI

AIR DEFFUSER

HEATING ACCESSORIES

- Diffuser outlets suitable for Kelec Evo1 and Evo2, Compact Evo1 and Evo2 heaters
- They can be easily installed without tools using the two lateral slides on the heater, with a clip holding them securely in place

| Reference | Version |
|-----------------|--------------------------|
| 83.0034.00.7432 | G |
| 83.0034.00.3412 | KC |
| 83.0034.00.7392 | ED4 (Ø 55 mm) |
| 83.0034.00.7979 | Ø 100 mm |
| 83.0034.00.7095 | ED4 (Ø 55 mm) with flaps |

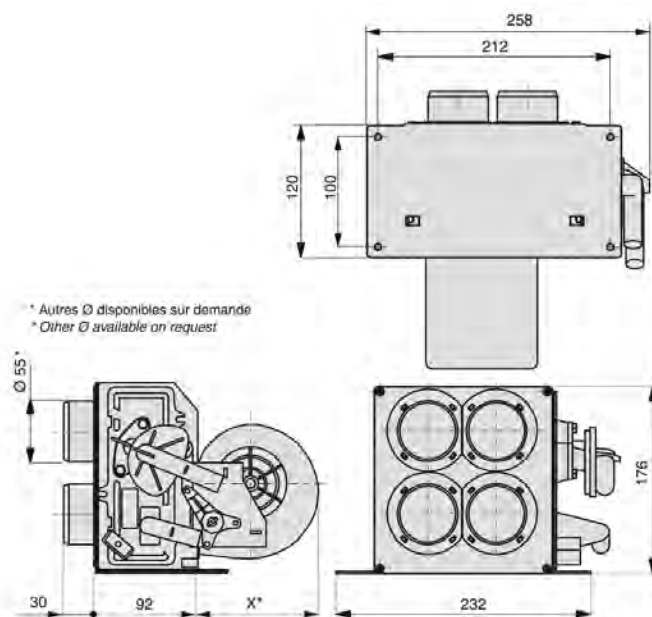


WATER HEATER - KALORI

AK ED4

WATER HEATER

- Water heat exchanger for cab, vehicle or micro-car (without driving license)
- Integrated valve for easy installation with a cable control (see accessories range)
- Highly efficient, automotive and economic installation with 3 closable air vents (KB Ø55mm) and 1 defrosting grille



| | |
|-------------------|---------|
| Water fitting | Ø 16 mm |
| Noise level | 65 dB |
| Ventilation speed | 3 |

| Voltage | Reference | Calorific power | Heating power | Airflow | Electrical consumption | Weight | X |
|-------------|-----------------|-----------------|---------------|----------|------------------------|--------|--------|
| AK 260 ED4 | | | | | | | |
| 12 V | 83.0012.01.8003 | 3650 Kcal/h | 4.25 kW | 195 m³/h | 50 W | 1.6 kg | 112 mm |
| 24 V | 83.0012.01.8103 | | | | | | |
| AK 350 ED4 | | | | | | | |
| 12 V | 83.0012.01.8302 | 4200 Kcal/h | 4.9 kW | 270 m³/h | 110 W | 1.8 kg | 133 mm |
| 24 V | 83.0012.01.8303 | | | | | | |
| AK 5300 ED4 | | | | | | | |
| 12 V | 83.0012.01.8007 | 5200 Kcal/h | 6 kW | 350 m³/h | 205 W | 2.3 kg | 145 mm |
| 24 V | 83.0012.01.8107 | | | | | | |

I

1

2

3

4

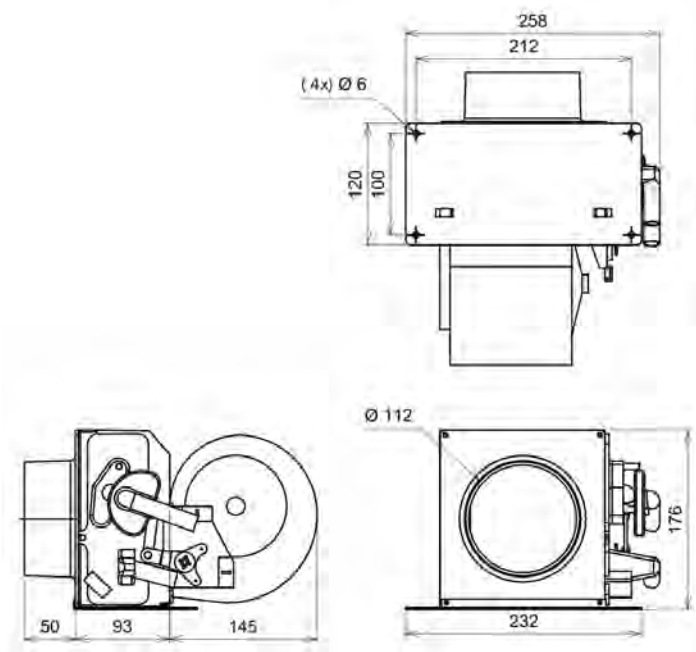
5

WATER HEATER - KALORI

AK Ø112

WATER HEATER

- Water heat exchanger with a Ø112mm duct outlet
- Integrated valve for a quick connection for cable control



| | |
|------------------------|----------|
| Heating power | 6 kW |
| Airflow | 350 m³/h |
| Electrical consumption | 205 W |
| Water fitting | Ø 16 mm |
| Noise level | 65 dB |
| Ventilation speed | 3 |

| Voltage | Reference |
|---------|-----------------|
| 12 V | 83.0012.01.8016 |
| 24 V | 83.0012.01.8116 |

I

1

2

3

4

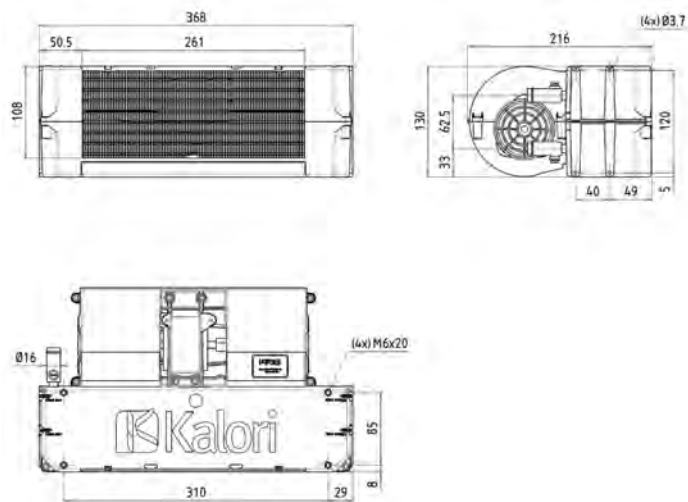
5

WATER HEATER - KALORI

SUPER K E

WATER HEATER

- Water heat exchanger
- It is also available as an air conditioning evaporator or combi (evaporator + heater)



| | |
|------------------------|----------|
| Heating power | 7.6 kW |
| Airflow | 500 m³/h |
| Electrical consumption | 100 W |
| Noise level | 69 dB |
| Water fitting | Ø 16 mm |
| Ventilation speed | 3 |

| Voltage | Reference |
|---------|-----------------|
| 12 V | 83.0012.02.6006 |
| 24 V | 83.0012.02.6102 |

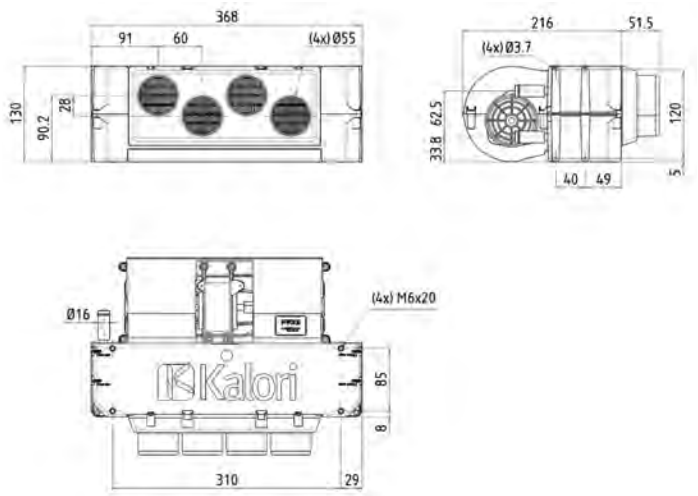


WATER HEATER - KALORI

SUPER K

WATER HEATER

- Water heat-exchanger
- This heater is ideal for a small / medium cabin, it is also available as an air conditioning (evaporator) or combi (evaporator + heater) version
- Fitted with slides on the front for the fitting of air diffusers



| | |
|------------------------|----------|
| Heating power | 7.6 kW |
| Airflow | 500 m³/h |
| Electrical consumption | 100 W |
| Noise level | 69 dB |
| Water fitting | Ø 16 mm |
| Ventilation speed | 3 |

| Voltage | Reference |
|----------------------|-----------------|
| Super K G | |
| 12 V | 83.0012.02.6000 |
| 24 V | 83.0012.02.6100 |
| Super K ED4 (Ø55 mm) | |
| 12 V | 83.0012.02.6001 |
| 24 V | 83.0012.02.6101 |
| Super K KC | |
| 12 V | 83.0012.02.6008 |
| 24 V | 83.0012.02.6108 |



WATER HEATER - KALORI

AIR DEFFUSER

HEATING ACCESSORIES

- Diffuser outlets suitable for Kelec Evo1 and Evo2, Compact Evo1 and Evo2 heaters
- They can be easily installed without tools using the two lateral slides on the heater, with a clip holding them securely in place

| Reference | Version |
|-----------------|---------------|
| 83.0034.00.7348 | G |
| 83.0034.00.7778 | KC |
| 83.0034.00.7527 | ED4 (Ø 55 mm) |

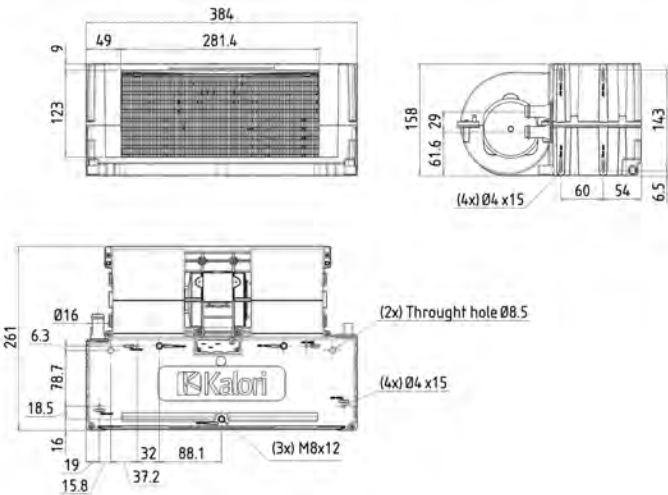


WATER HEATER - KALORI

KOOL E

WATER HEATER

- Water heat – exchanger
- Very efficient for a medium cab
- It is also available as an air conditioning (evaporator) or combi (evaporator + heater) version



| | |
|------------------------|----------|
| Heating power | 10 kW |
| Airflow | 520 m³/h |
| Electrical consumption | 180 W |
| Water fitting | Ø 16 mm |
| Ventilation speed | 3 |

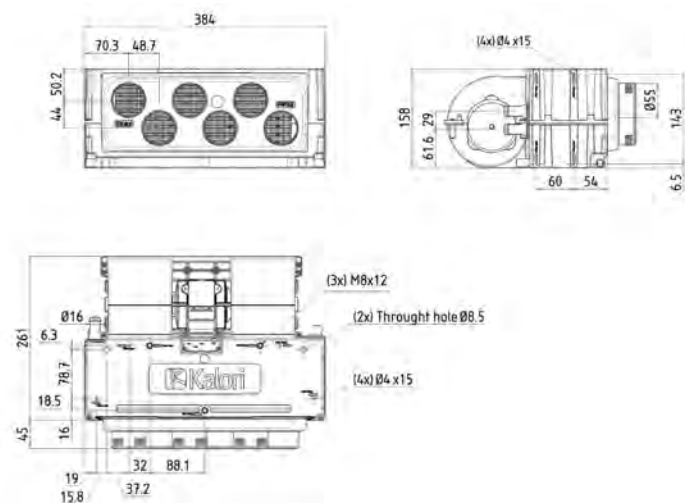
| Voltage | Reference |
|---------|-----------------|
| 12 V | 83.0012.01.2200 |
| 24 V | 83.0012.01.2300 |

WATER HEATER - KALORI

KOOL

WATER HEATER

- Water heat-exchanger
- This heater is ideal for a medium cabin, it is also available as an air conditioning (evaporator) or combi (evaporator + heater) version
- Fitted with slides on the front panel for the installation of air diffusers



ED6



KC

| | |
|------------------------|----------|
| Heating power | 10 kW |
| Airflow | 520 m³/h |
| Electrical consumption | 180 W |
| Water fitting | Ø 16 mm |
| Ventilation speed | 3 |

| Voltage | Reference |
|--------------------------|-----------------|
| Kool ED6 (Ø55 mm) | |
| 12 V | 83.0012.01.2201 |
| 24 V | 83.0012.01.2301 |
| Kool KC | |
| 12 V | 83.0012.01.2203 |
| 24 V | 83.0012.01.2303 |

I

1

2

3

4

5

WATER HEATER - KALORI

AIR DIFFUSER FOR KOOL

HEATING ACCESSORIES

- Front-mounted air diffuser for Kool HVAC

| Reference | Version |
|-----------------|-------------|
| 83.0034.00.7075 | ED6 (Ø55mm) |
| 83.0034.01.7148 | KC |



ED6



KC



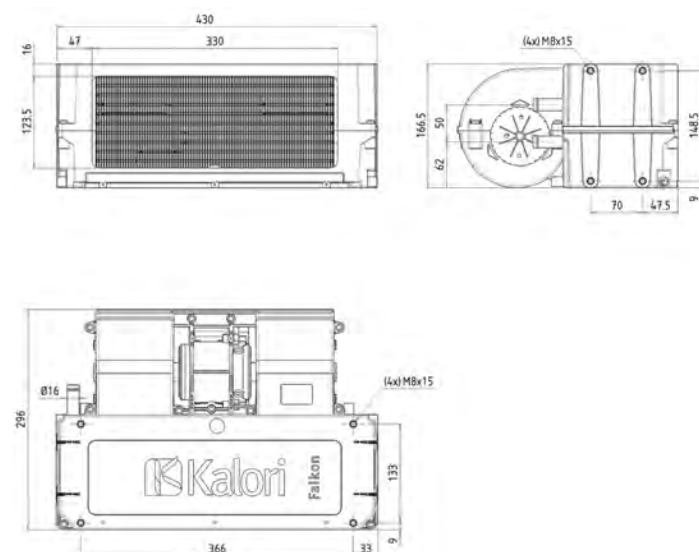
KC

WATER HEATER - KALORI

FALKON

WATER HEATER

- Water heat-exchanger
- Equipped with a radial fan with a high airflow, highly resistant to pressure losses, for an optimum air diffusion even with important duct lengths
- This heater is ideal for a medium / large cabin; also available as an air conditioning (evaporator) or combi (evaporator + heater) version, and in an electric version



| | |
|------------------------|----------|
| Heating power | 14.8 kW |
| Airflow | 725 m³/h |
| Electrical consumption | 360 W |
| Weight | 7.7 kg |
| Water fitting | Ø 16 mm |
| Ventilation speed | 3 |

| Voltage | Reference |
|----------------------------|-----------------|
| Falkon E | |
| 12 V | 83.0012.02.9000 |
| 24 V | 83.0012.02.9100 |
| Falkon ED6 (Ø55 mm) | |
| 12 V | 83.0012.02.9001 |
| 24 V | 83.0012.02.9101 |
| Falkon KC | |
| 12 V | 83.0012.02.9007 |
| 24 V | 83.0012.02.9107 |



WATER HEATER - KALORI

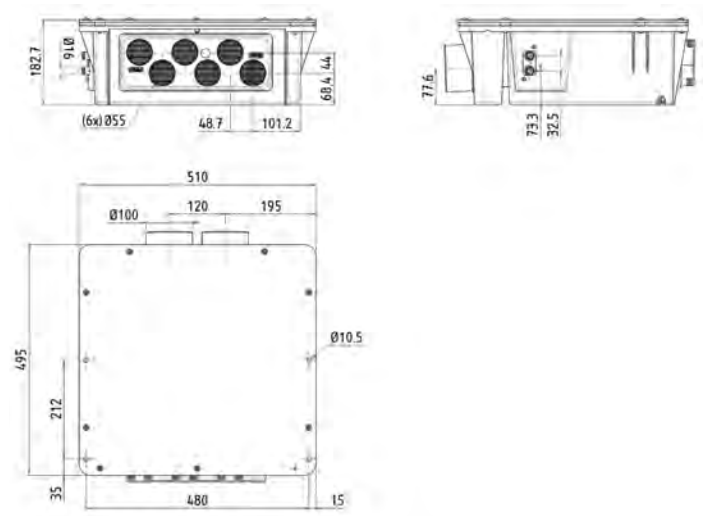
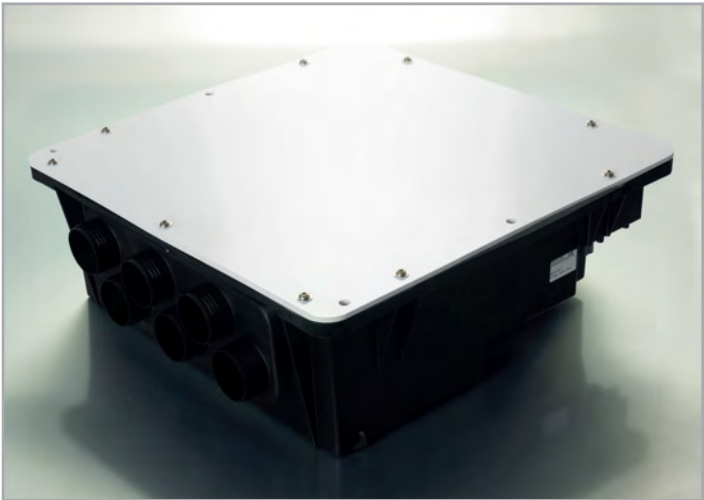
FALKON BOX MARITIME

WATER HEATER

- Water heater for boat
- If installed in the engine compartment, 2 air inlets are used to channel the sucked air from a healthy area

| | |
|------------------------|----------|
| Heating power | 14.8 kW |
| Airflow | 725 m³/h |
| Electrical consumption | 360 W |
| Weight | 7.2 kg |
| Water fitting | Ø 16 mm |
| Ventilation speed | 3 |

| Voltage | Reference |
|---------|-----------------|
| 12 V | 83.0012.03.1001 |
| 24 V | 83.0012.03.1001 |

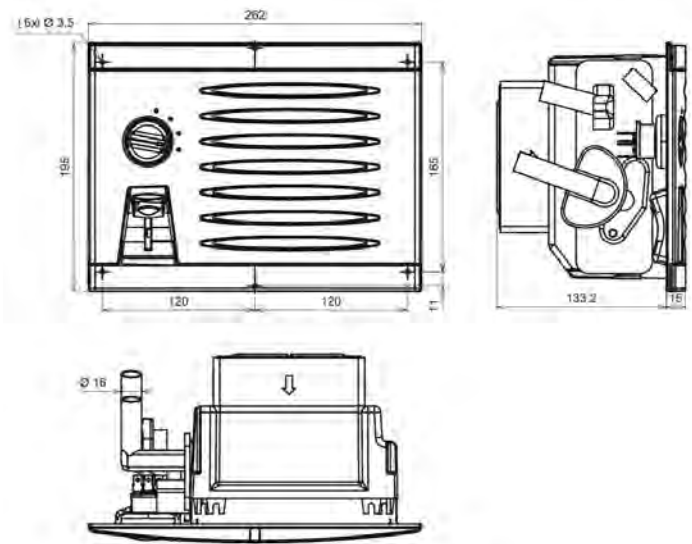


WATER HEATER - KALORI

KUBA VA200

WATER HEATER

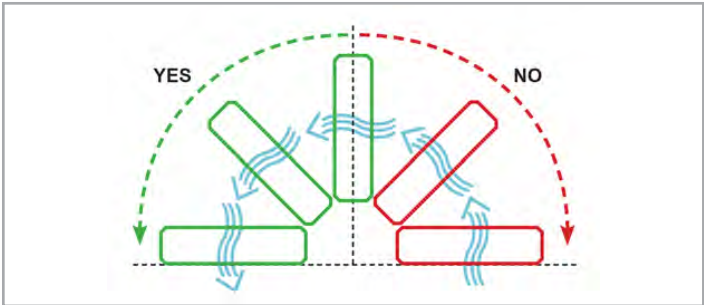
- Water heat exchanger ideal for motorhome, boat or van
- Brushless motor with very low power consumption
- Temperature and fan speed controls are integrated into the front of the heater
- The water valve is also included



| | |
|------------------------|-------------|
| Calorific power | 2800 Kcal/h |
| Heating power | 3.25 kW |
| Airflow | 150 m³/h |
| Electrical consumption | 7 W |
| Noise level | 48 dB |
| Weight | 1.3 kg |
| Water fitting | Ø 16 mm |
| Ventilation speed | 2 |

| Voltage | Reference | Black |
|---------|-----------------|-------|
| 12 V | 83.0012.01.8085 | |
| 24 V | 83.0012.01.8185 | |

Installation instructions:



The heating unit must not be installed with the airflow directed upwards.

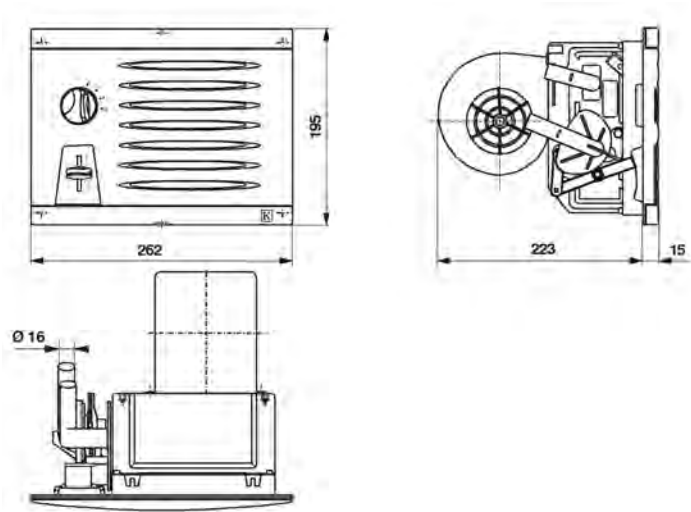


WATER HEATER - KALORI

KUBA 350

WATER HEATER

- Water heat exchanger ideal for motorhome, boat or van
- Temperature and fan speed controls are integrated into the front of the heater
- The water valve is also included



| | |
|------------------------|-------------|
| Calorific power | 4200 Kcal/h |
| Heating power | 4.9 kW |
| Airflow | 270 m³/h |
| Electrical consumption | 110 W |
| Noise level | 65 dB |
| Weight | 1.7 kg |
| Water fitting | Ø 16 mm |
| Ventilation speed | 3 |

| Voltage | Reference | Color |
|---------|-----------------|-------|
| 12 V | 83.0012.01.8050 | |
| 24 V | 83.0012.01.8150 | Black |
| 12 V | 83.0012.01.8051 | |
| 24 V | 83.0012.01.8151 | |

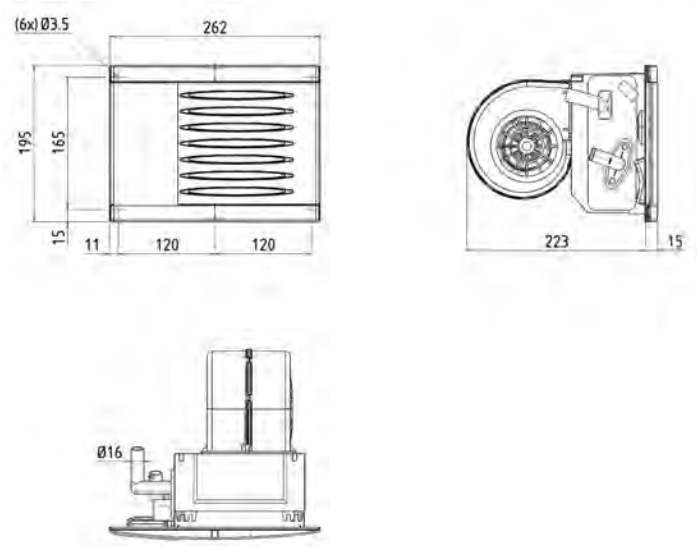


WATER HEATER - KALORI

KUBA FA 350

WATER HEATER

- Water heat exchanger ideal for motorhome, boat or van



| | |
|------------------------|-------------|
| Calorific power | 4400 Kcal/h |
| Heating power | 5.2 kW |
| Airflow | 270 m³/h |
| Electrical consumption | 110 W |
| Noise level | 65 dB |
| Weight | 1.7 kg |
| Water fitting | Ø 16 mm |
| Ventilation speed | 3 |

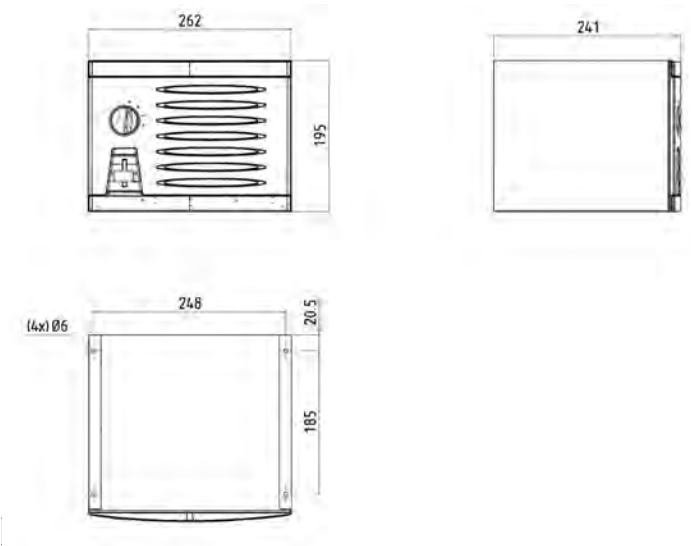
| Voltage | Reference | Color |
|---------|-----------------|-------|
| 12 V | 83.0012.01.8053 | |
| 24 V | 83.0012.01.8153 | Black |
| 12 V | 83.0012.01.8054 | |
| 24 V | 83.0012.01.8154 | Grey |

WATER HEATER - KALORI

KUBA KUB

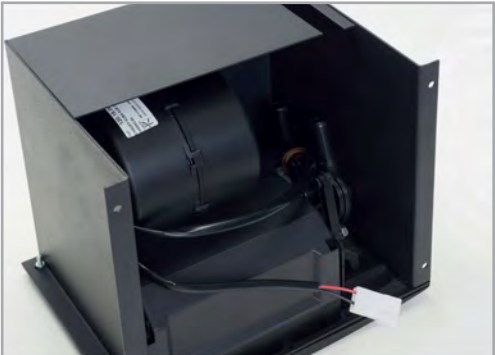
WATER HEATER

- Water heat exchanger ideal for van
- This heater is integrated in a metal casing, which is fixed on the ground or under a seat
- Temperature and fan speed controls are integrated into the front of the heater
- The water valve is also included



| | |
|------------------------|-------------|
| Calorific power | 3650 Kcal/h |
| Heating power | 4.25 kW |
| Airflow | 195 m³/h |
| Electrical consumption | 50 W |
| Noise level | 65 dB |
| Weight | 3.6 kg |
| Water fitting | Ø 16 mm |
| Ventilation speed | 3 |

| Voltage | Reference | Black |
|---------|-----------------|-------|
| 12 V | 83.0012.01.8060 | |
| 24 V | 83.0012.01.8160 | |

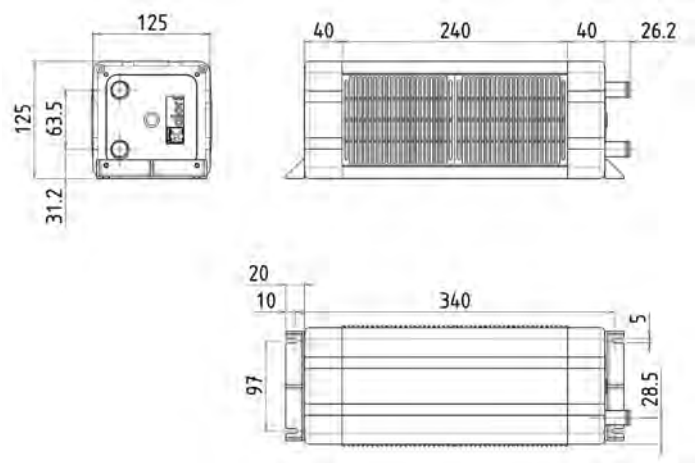


WATER HEATER - KALORI

KOSTO 2

ELECTRIC HEATER

- Water heat-exchanger for minibus, coach or bus, highly resistant casing in aluminum and polycarbonate profile
- It is equipped with two brushless motors

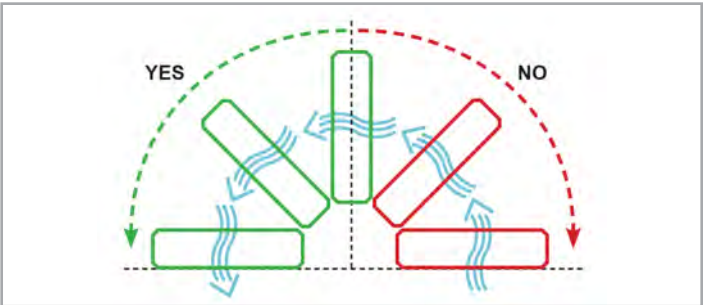


| | |
|------------------------|-------------|
| Calorific power | 3300 Kcal/h |
| Heating power | 3.8 kW |
| Airflow | 220 m³/h |
| Electrical consumption | 20 W |
| Noise level | 54 dB |
| Water fitting | Ø 16 mm |
| Ventilation speed | 2 |

| Voltage | Reference |
|---------|-----------------|
| 12 V | 83.0012.02.3001 |
| 24 V | 83.0012.02.3101 |



Installation instructions:



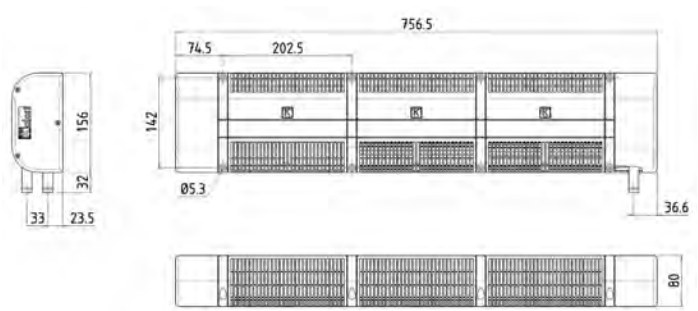
The heating unit must not be installed with the airflow directed upwards.

WATER HEATER - KALORI

BAIKAL 3

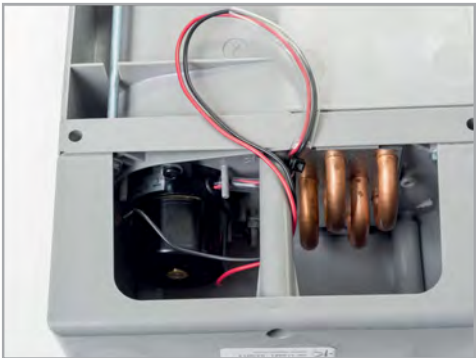
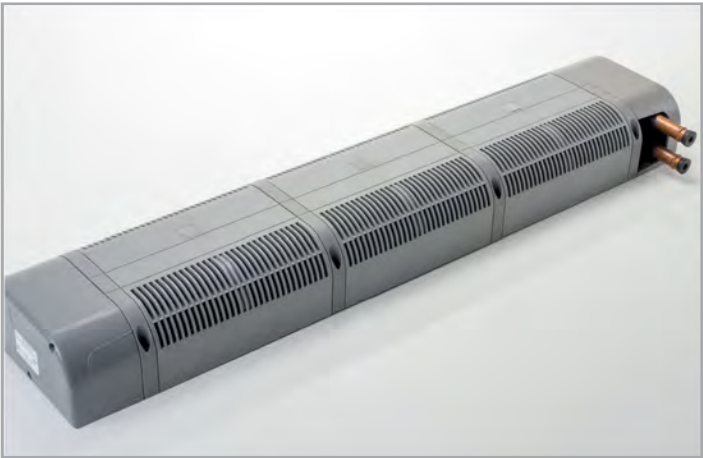
WATER HEATER

- Baikal is a ventilated convector
- It replaces 5m of unvented convector, or completes the installation where sections are too short to provide sufficient comfort
- The polycarbonate body is resistant to shocks and the brushless motor provides an important period of use



| | |
|------------------------|-------------|
| Calorific power | 3440 Kcal/h |
| Heating power | 4 kW |
| Airflow | 220 m³/h |
| Electrical consumption | 15 W |
| Noise level | 55 dB |
| Weight | 2.3 kg |
| Water fitting | Ø 16 mm |
| Ventilation speed | 1 |

| Voltage | Reference |
|---------|-----------------|
| 12 V | 83.0012.02.4023 |
| 24 V | 83.0012.02.4123 |

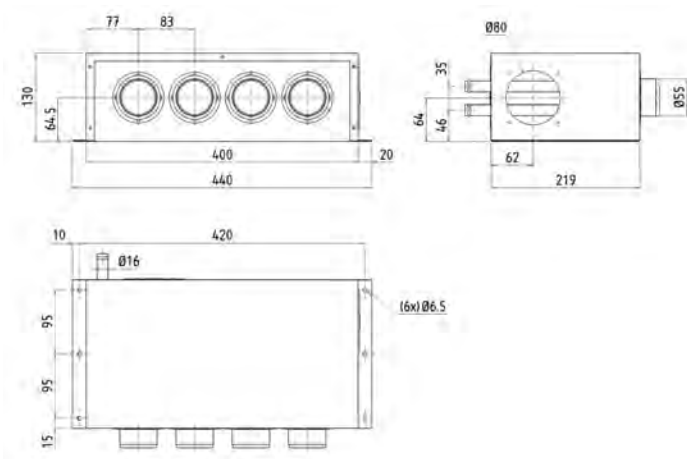


WATER HEATER - KALORI

KINOX

WATER HEATER

- Water heater for boat, if installed in the engine compartment, 2 air inlets are used to channel the sucked air from a healthy area
- Stainless steel casing
- 4 x Ø55mm connectors for air outlets
- Supplied with 2 x Ø80mm connectors and 2 x 95x95 covers to cover unused holes



| | |
|------------------------|-------------|
| Calorific power | 8600 Kcal/h |
| Heating power | 10 kW |
| Airflow | 520 m³/h |
| Electrical consumption | 180 W |
| Noise level | 69 dB |
| Weight | 5.2 kg |
| Water fitting | Ø 16 mm |
| Ventilation speed | 3 |

| Voltage | Reference |
|---------|-----------------|
| 12 V | 83.0012.01.6010 |
| 24 V | 83.0012.01.6110 |

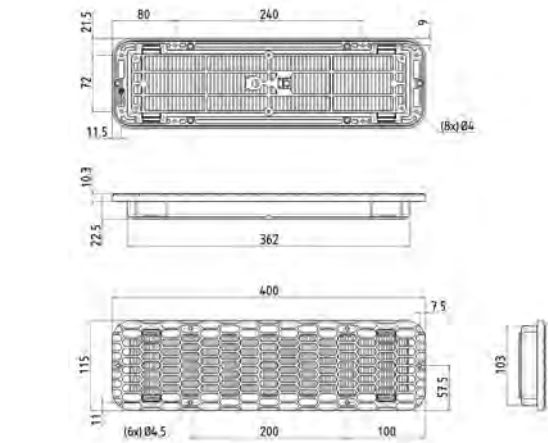
ACCESSORIES - KALORI

RECYCLING GRILLE

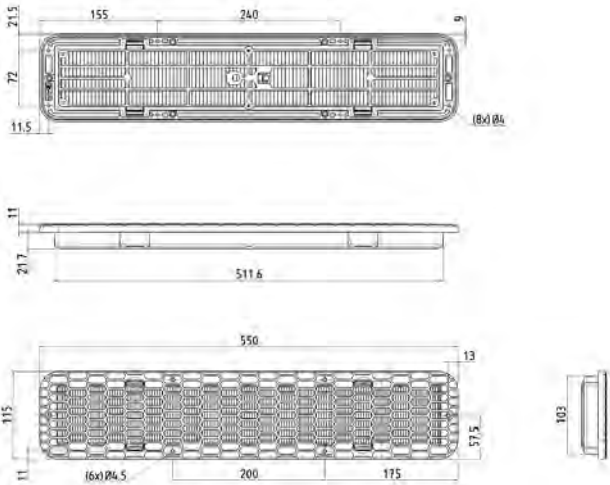
AIR DIFFUSION

- Recycling grille, equipped with filter holder and pleated paper filter. The filter can easily be replaced without tools, by simply pressing the clips
- For air conditioning, install the largest possible grille
- Integrated temperature sensor mount (for PCK control panel)

| Material | PP GF30 / ABS | |
|-----------|-----------------|-----------------|
| Dimension | Version | Reference |
| 400 mm | Grille + Filter | 83.0034.02.2055 |
| | Filter only | 83.0034.07.0269 |



| Dimension | Version | Reference |
|-----------|-----------------|-----------------|
| 400 mm | Grille + Filter | 83.0034.02.2055 |
| | Filter only | 83.0034.07.0269 |

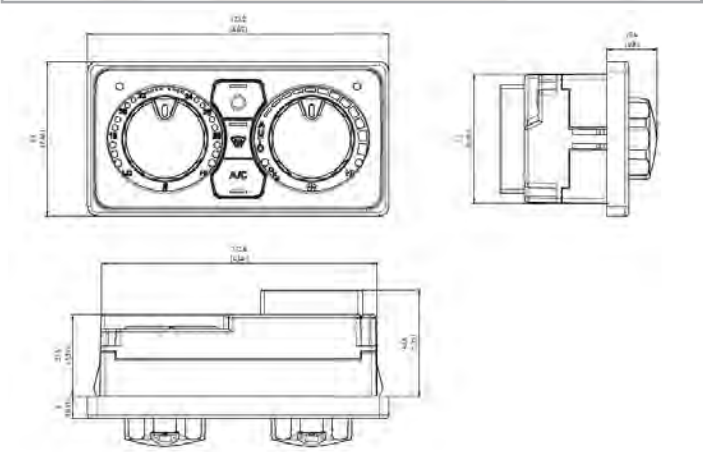


ACCESSORIES - KALORI

PCK 2 CONTROL PANEL

REMOTE CONTROL

- Electronic control panel for air conditioning and water (with proportional valve) or electric heating
- Automatic, manual and defroster mode
- Available with recycling knob
- Fan speed control from 0 to 100% with PWM box
- To fit in a wall
- Outside and inside temperature sensors included
- Available with 3 knobs to control adjustable air diffusion flaps



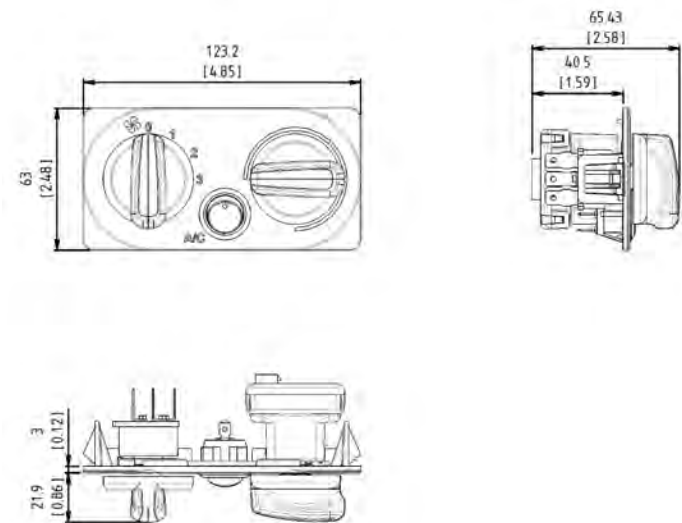
| Reference | Voltage | Heating Model | Knobs | Option |
|-----------------|-----------|---------------|-------|----------------|
| 83.0012.01.6010 | 12 / 24 V | Water | 2 | Recyclage |
| 83.0012.01.6110 | 12 / 24 V | Water | 2 | AC + Recyclage |

ACCESSORIES - KALORI

PCK 3 CONTROL PANEL

REMOTE CONTROL

- Control panel for air conditioning and/or water heater (proportional valve, pulse or cable + manual valve) or electric
- 3-speed fan switch or 0-100% with PWM box control



| Reference | Heating Model | Option | Ventilation speed |
|-----------------|----------------------------|-----------------|-------------------|
| 83.0034.03.0473 | Water - Proportional valve | - | 3 |
| 83.0034.03.0451 | Water - Proportional valve | A/C | 3 |
| 83.0034.03.0452 | Water - Proportional valve | Recyclage | 3 |
| 83.0034.03.0453 | Water - Proportional valve | A/C + Recyclage | 3 |
| 83.0034.03.0458 | PTC 3 Positions | A/C | 3 |
| 83.0034.03.0459 | PTC 3 Positions | A/C + Recyclage | 3 |
| 83.0034.03.0466 | PTC 3 Positions | Recyclage | 3 |
| 83.0034.03.0471 | câble | - | 3 |
| 83.0034.03.0460 | Water - Cable valve | A/C + Recyclage | 3 |
| 83.0034.03.0461 | Water - Cable valve | Recyclage | 3 |
| 83.0034.03.0462 | Water - Cable valve | A/C | 3 |
| 83.0034.03.0463 | Water - Proportional valve | A/C | 0-100% |
| 83.0034.03.0465 | PTC 3 Positions | - | 3 |
| 83.0034.06.0471 | Water - Cable valve | - | 3 |
| 83.0034.03.0474 | A/C 2 Positions | - | 3 |